

---

# Village at Loch Lomond Marina

## Year 2 Annual Wetland Monitoring Report

Loch Lomond Marina  
San Rafael, California

---

**Prepared For:**

John Arvin  
Vice President  
Marina Village Associates, LLC  
1999 Avenue of the Stars, Suite 2850  
Los Angeles, CA 90067

**WRA Contact:**

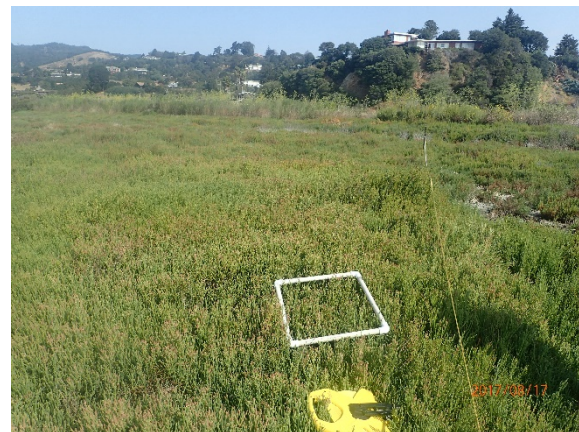
Sean Avent  
avent@wra-ca.com

Tim Degraff  
degraff@wra-ca.com

**Date:**

November 2017

WRA Project Number: 12094-3  
Corps Permit Number : 2004 287030N  
RWQCB Permit Number: 2003-0017, Place  
No: 786523  
BCDC Permit Number: 10-06  
City of San Rafael City Council Resolution  
12332



*This Page Intentionally Left Blank*

## TABLE OF CONTENTS

LIST OF APPENDICES.....	ii
EXECUTIVE SUMMARY.....	1
1.0 INTRODUCTION.....	2
2.0 PROJECT DESCRIPTION.....	2
2.1 Project Location.....	2
2.2 Summary of Mitigation Project.....	2
2.3 Summary of Mitigation Area Creation.....	6
3.0 PERFORMANCE CRITERIA.....	6
4.0 METHODS.....	13
4.1 Hydrology.....	13
4.2 Soils.....	13
4.3 Vegetation.....	14
4.3.1 Vegetation Sample Quadrat Locations.....	14
4.3.2 Vegetation Field Monitoring.....	18
4.4 Photographic Documentation.....	22
4.5 Management Plan.....	22
5.0 RESULTS.....	22
5.1 Hydrology.....	22
5.2 Soils.....	23
5.3 Vegetation.....	24
5.4 Management Plan.....	24
6.0 DISCUSSION AND RECOMMENDATIONS.....	24
6.1 Hydrology.....	24
6.2 Soils.....	24
6.3 Vegetation.....	25
6.4 Recommendations.....	25
7.0 REFERENCES.....	26

## LIST OF FIGURES

Figure 1. Project Area Location Map.....	4
Figure 2. As-Built Grading Plans.....	8
Figure 3. As-Built Planting Plan.....	10
Figure 4. Wetland Monitoring Transects and Photo Point Locations.....	16
Figure 5. Vegetation Monitoring Transects and Sampling Quadrats.....	20

## LIST OF TABLES

Table 1. Seasonal Wetland Mitigation Area Summary.....	6
Table 2. Number of Plants in Restored Seasonal Wetlands.....	12
Table 3. Performance Criteria of Mitigation Wetlands.....	12
Table 4. Lengths of Wetland Vegetation Transects.....	18
Table 5. Braun-Blanquet System of Vegetation Cover Classes.....	18
Table 6. Wetland Mitigation Area Success Criteria Summary.....	23

## **LIST OF APPENDICES**

Appendix A – Representative Site Photographs  
Appendix B – Vegetation Monitoring Results  
Appendix C – Hydrology Monitoring Forms  
Appendix D – Management Plan Monitoring Forms  
Appendix E – US Army Corps of Engineers Mitigation Monitoring Form

## **LIST OF PREPARERS**

Tim Degraff - Chief Executive Officer  
Sean Avent- Project Manager, Associate Biologist  
David Zwick- Biologist  
Rhiannon Korhummel - Biologist  
Francis Hourigan- GIS Specialist

## **EXECUTIVE SUMMARY**

In 2017, WRA, Inc. conducted the second year of mitigation wetland monitoring at the Village at Loch Lomond Marina in San Rafael, Marin County, California. Monitoring was conducted to document habitat development and to assess whether the site met performance criteria for wetland vegetation and hydrology conditions, including hydric soils and evidence of wetland hydrology. WRA conducted surveys for wetland inundation, soil saturation, invasive plant cover, non-native plant cover, and total vegetation cover. All Year 2 success criteria were met.

## **1.0 INTRODUCTION**

This report presents the results of the second year (Year 2) of mitigation wetland monitoring at the Village at Loch Lomond Marina (Project) in San Rafael, Marin County, California. Three mitigation wetlands were created to mitigate for permanent and temporary impacts to jurisdictional wetlands as part of the Project. Mitigation wetland monitoring is conducted annually for 5 years as required by the U.S. Army Corps of Engineers (Corps, Permit Number 2004-287030N) and Regional Water Quality Control Board (RWQCB, Permit Number 2003-0017-DWQ), Bay Conservation and Development Commission (BCDC, Permit Number 2006.010.03) and as outlined in *The Village at Loch Lomond Marina Wetland Mitigation/Monitoring Proposal and Management Plan* (WRA 2005). Mitigation wetland monitoring is conducted annually for 10 years per the City of San Rafael City Council Resolution 12332 for the Environmental Design and Review Permit ED 04-063. Monitoring is conducted to document habitat development and assess whether the site is meeting performance criteria for wetland vegetation and hydrology conditions (hydric soils and evidence of wetland hydrology). This monitoring report identifies any problems with flooding, erosion, grading elevations, invasion of non-native species, and/or other general causes of poor vegetation survival or wetland degradation. Recommendations to improve success in achieving performance- criteria are also included, if necessary.

The Project resulted in permanent impacts to 0.014 acre of seasonal wetland, and 0.014 acre of unvegetated intertidal habitat. An additional 0.183 acre of seasonal wetland was temporarily impacted. Permanent impacts to 0.028 acre of seasonal wetland and unvegetated intertidal habitat were mitigated onsite by restoring 0.21 acre of seasonal wetlands. Grading was completed in 2015 and was subsequently planted with native species. The final creation resulted in 0.24 acre of wetlands within the mitigation wetlands, 0.03 acre more than planned.

## **2.0 PROJECT DESCRIPTION**

### **2.1 Project Location**

The Project is part of an approximately 128 acre property located at 82 Loch Lomond Dr. in San Rafael, Marin County, California (37.97°N and 122.48°W; Figure 1). The Project is located approximately 2 miles east of U.S. Highway 101, immediately south of Point San Pedro Road. Elevations within the Project area ranged from approximately 2 feet below to 9 feet above mean sea level (MSL).

### **2.2 Summary of Mitigation Project**

The Applicant was permitted to construct buildings, homes, and offices associated with marina use, and improve previously existing marina facilities. Because impacts to the wetland and unvegetated subtidal habitat could not be avoided by the Project, regulatory permits were obtained prior to the start of construction. Corps and RWQCB permits authorized the mitigation of 0.028 acres of impacts by the on-site creation of 0.21 acre of seasonal wetlands. Three areas totaling 0.24 acre adjacent to existing seasonal wetlands were proposed as a mitigation site for wetland restoration. These three areas were excavated and graded to create native wetland habitat (Mitigation Wetlands).

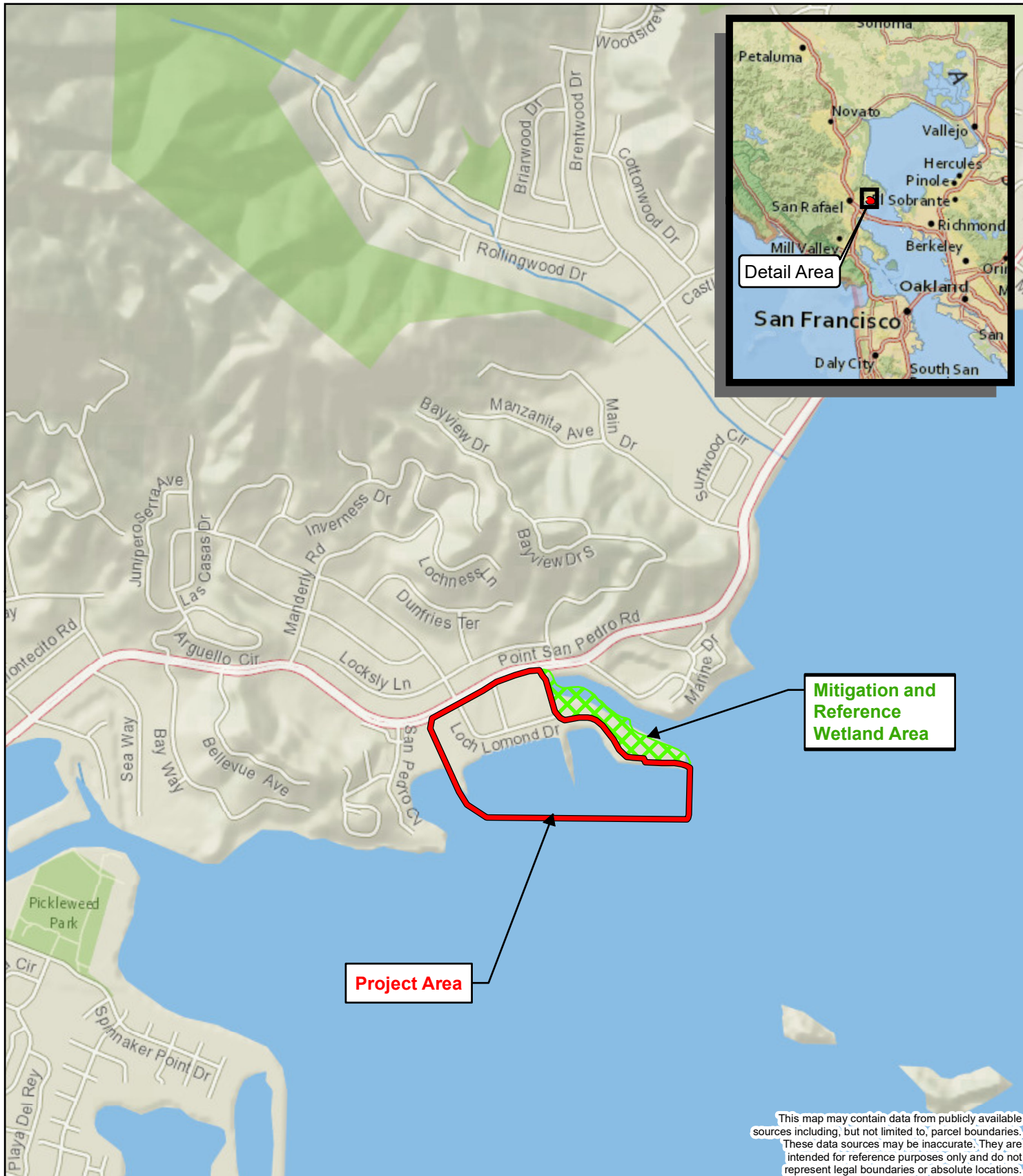
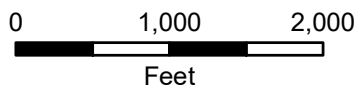


Figure 1. Project Area Location Map

Loch Lomond Marina  
Marin County, California



Map Prepared Date: 12/22/2016  
Map Prepared By: fhourigan  
Base Source: Esri Streaming - National Geographic  
Data Source(s): WRA

*This Page Left Blank Intentionally*



## 2.3 Summary of Mitigation Area Creation

The Mitigation Wetlands construction was completed in accordance with the *WRA Wetland Mitigation Landscape Design Plans*, dated August 14, 2009 (Landscape Plans, WRA, 2009). Construction activities commenced in June 2015 and were completed in December 2015. Figure 2 shows the as-built grading plans and Figure 3 shows the planting plans. The Mitigation Wetlands were constructed in three connected smaller mitigation wetlands, hereafter referred to as MW1, MW2 and MW3. MW1 is 0.088 acre and is located in the northwest corner of the Mitigation Wetland area. MW2 is 0.069 acre and located in the southwest portion of the Mitigation Wetland area. MW3 is located in the southeastern corner of the Mitigation Wetland area and is 0.082 acre. The built acreages of MW1, MW2, and MW3 sums to 0.24 acre, 0.03 acre greater than the mitigation requirements of 0.21 acre.

The locations and sizes of the constructed Mitigation Wetlands are illustrated in Figures 2 and 3, and design and as-built acreages are listed in Table 1. Appendix A contains representative photographs of MW1, MW2, and MW3 and the condition of each during Year 2 monitoring period. The design and as-built areas are shown in Table 1.

Table 1. Seasonal Wetland Mitigation Area Summary

	Design Area (Acre)	As-Built Area (Acre)	Mitigation Area Totals (Acre)	Mitigation Area Requirement (Acre)
<b><u>Seasonal Mitigation Wetlands</u></b>				
MW1	0.09	0.09	0.09	*
MW2	0.07	0.07	0.07	*
MW3	0.08	0.08	0.08	*
<b>TOTAL TIDAL WETLAND AREA</b>	<b>0.24</b>	<b>0.24</b>	<b>0.24</b>	<b>0.21</b>

Following earthwork, a spray irrigation system was installed as specified in the Landscape Plans. Native marsh species were installed within MW1, MW2, and MW3 after grading was completed. The installation locations of plantings are shown in Figure 3. The design and as-built quantities of plantings are listed in Table 2.

## 3.0 PERFORMANCE CRITERIA

Following construction and planting of the Mitigation Wetlands, a 5-year monitoring program is being implemented to comply with the Corps and RWQCB permits to determine whether the Mitigation Wetlands have achieved functions equal to or greater than the existing seasonal Reference Wetland, and whether corrections to the site designs or implementation procedure are necessary. This monitoring program will be continued for another 5 years to meet a 10-year monitoring period to comply with the City of San Rafael City Council Resolution 12332. This annual monitoring report constitutes Year 2 (2017) of monitoring. The Year 2 performance criteria will be used as benchmarks for this report (see Table 3).

*This Page Left Blank Intentionally*

**LOCH LOMOND MARINA**  
 WETLAND MITIGATION PROJECT  
 SAN RAFAEL, CALIFORNIA

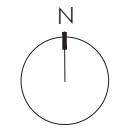
**AS-BUILT PLANTING PLAN**

09/14/09 | 100% PERMIT SET  
 Date Issues And Revisions No.

PROJECT #12094-2  
 DRAWN BY: MWS, KET  
 CHECKED BY: GJS  
 ORIGINAL DRAWING SIZE: 24 X 36

SCALE: AS INDICATED

0 30  
 SCALE: 1" = 30'



Sheet

FIGURE 2

**PLANT LEGEND - WETLAND PLANTING AREAS**

SYMBOL	BOTANICAL NAME	COMMON NAME	SIZE	ON-CENTER SPACING (FT.)	ELEVATION RANGE	
	DIS SPI	DISTICHUS SPICATA	SALT GRASS	TREEBAND	1.5	+3.5 TO +4.5
	SAL VIR	SAJICORNIA VIRGINICA	COMMON PICKLEWEED	TREEBAND	4.0	+3.0 TO +4.0
	SCH MAR	SCHOENOPLECTUS	SALT-MARSH BULRUSH	TREEBAND	1.5	+2.5 TO +3.0

NOTE: PLANT ALL SPECIES WITH TRIANGULATED SPACING IN CLUMPS OF 3, 5, AND 7 PLANTS IN ORDER TO ACHIEVE THE SPECIFIED PERCENT COVER.

**PLANT QUANTITIES - WETLAND PLANTING AREAS**

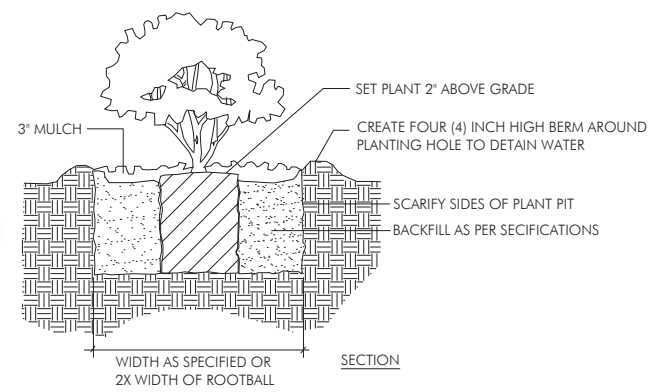
SYMBOL	AREA (SQ. FEET)	AREA (ACRES)	DIS SPI	SAL VIR	SCH MAR	DESIGN TOTAL	AS-BUILT TOTAL
DIS SPI - 1	2,437	0.06	866	0	0	866	866
DIS SPI - 2	270	0.01	96	0	0	96	96
DIS SPI - 3	65	0.00	23	0	0	23	23
DIS SPI - 4	961	0.02	342	0	0	342	342
DIS SPI - 5	1,206	0.03	429	0	0	429	429
DIS SPI - 6	721	0.02	256	0	0	256	256
SAL VIR - 1	3,716	0.09	0	186	0	186	186
SAL VIR - 2	2,763	0.06	0	138	0	138	138
SAL VIR - 3	2,468	0.06	0	123	0	123	123
SCH MAR - 1	3,718	0.09	0	0	1,322	1,322	1,031
SCH MAR - 2	923	0.02	0	0	328	328	256
<b>TOTAL</b>			<b>2012</b>	<b>447</b>	<b>1650</b>	<b>4110</b>	<b>3747</b>

NOTE: PLANT QUANTITIES ARE CALCULATED FOR 80% COVER OF WETLAND AREA.

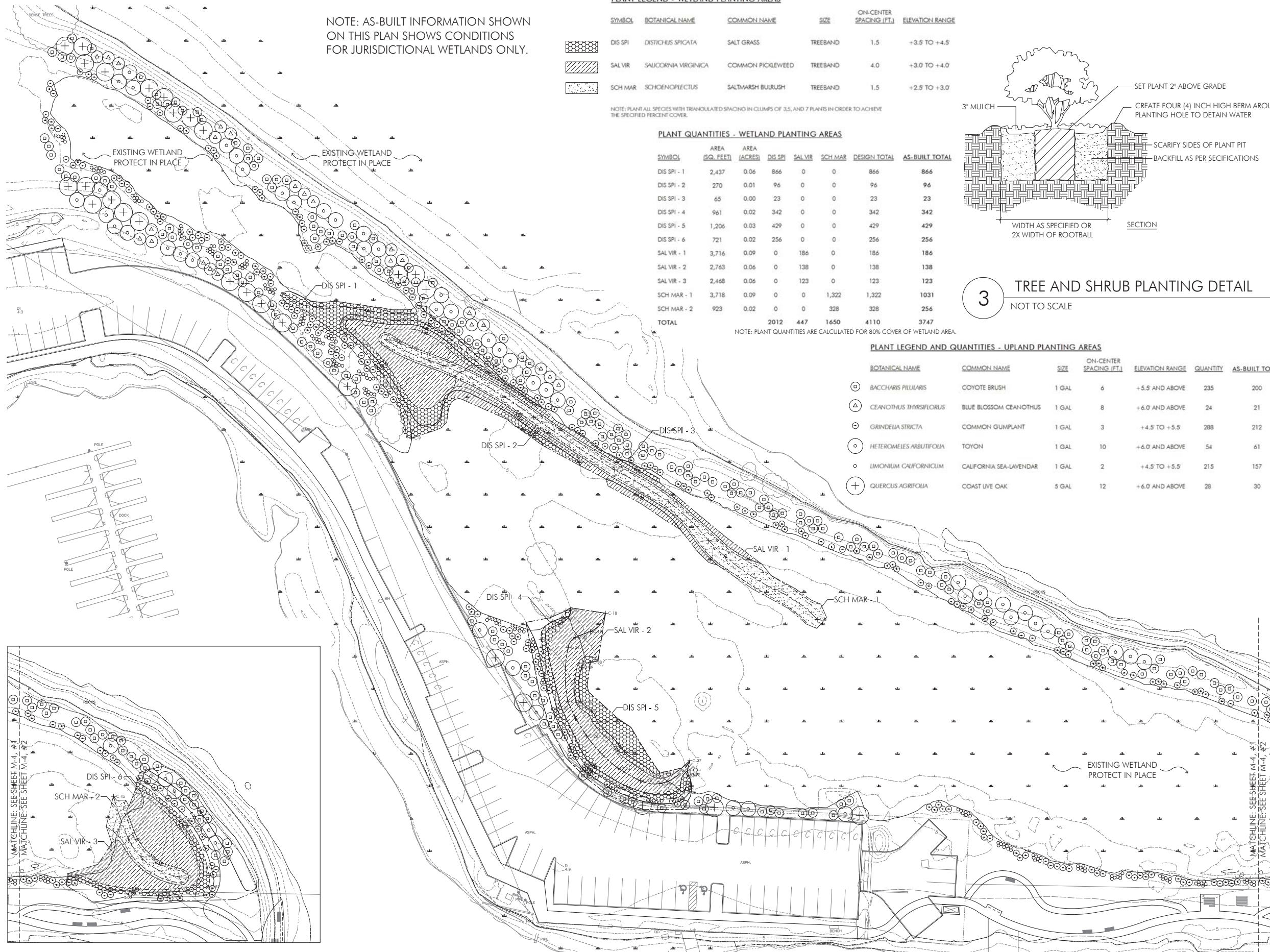
**PLANT LEGEND AND QUANTITIES - UPLAND PLANTING AREAS**

BOTANICAL NAME	COMMON NAME	SIZE	ON-CENTER SPACING (FT.)	ELEVATION RANGE	QUANTITY	AS-BUILT TOTAL	
	BACCHARIS PILLULARIS	COYOTE BRUSH	1 GAL	6	+5.5 AND ABOVE	235	200
	CEANOETHUS THYRSIFLORUS	BLUE BLOSSOM CEANOETHUS	1 GAL	8	+6.0 AND ABOVE	24	21
	GRINDELIA STRICTA	COMMON GUMPLANT	1 GAL	3	+4.5 TO +5.5	288	212
	HETEROMELES ARBUTIFOLIA	TOYON	1 GAL	10	+6.0 AND ABOVE	54	61
	LIMONIUM CALIFORNICUM	CALIFORNIA SEA-LAVENDAR	1 GAL	2	+4.5 TO +5.5	215	157
	QUERCUS AGRIFOLIA	COAST LIVE OAK	5 GAL	12	+6.0 AND ABOVE	28	30

**3 TREE AND SHRUB PLANTING DETAIL**  
 NOT TO SCALE



NOTE: AS-BUILT INFORMATION SHOWN ON THIS PLAN SHOWS CONDITIONS FOR JURISDICTIONAL WETLANDS ONLY.



**2 INSET PLANTING PLAN**  
 SCALE: 1" = 30' - 0"

**1 PLANTING PLAN**  
 SCALE: 1" = 30' - 0"

*This Page Intentionally Left Blank*

**GRADING NOTES**

1. THE GRADING PLANS INDICATE FINISHED GRADE ELEVATIONS. REFER TO THE GRADING DETAILS FOR SUBGRADE SPECIFICATIONS.
2. MINIMUM AREA REQUIREMENT WITHIN THE WETLAND BOUNDARY SHALL BE AS NOTED ON THE DRAWINGS AND SHALL BE MEASURED AT THE ELEVATION NOTED.
3. NO GRADING SHALL OCCUR WITHIN THE DRIPLINE OF EXISTING TREES TO REMAIN. THE CONTRACTOR IS SOLELY RESPONSIBLE FOR ANY DAMAGE TO EXISTING TREES.

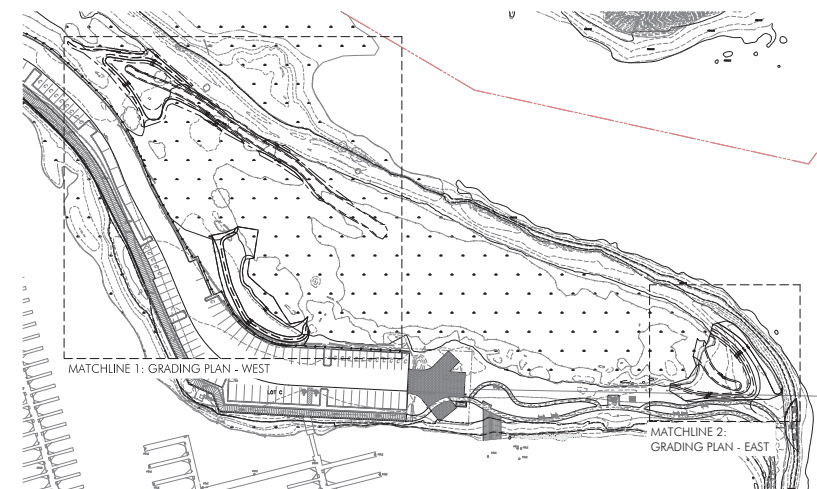
4. THE CONTRACTOR SHALL MINIMIZE GRADING AND VEGETATION REMOVAL WITHIN THE EXISTING WETLAND TO THE AREAS SHOWN WITHIN THE LIMIT OF GRADE.

**CUT & FILL ESTIMATES**

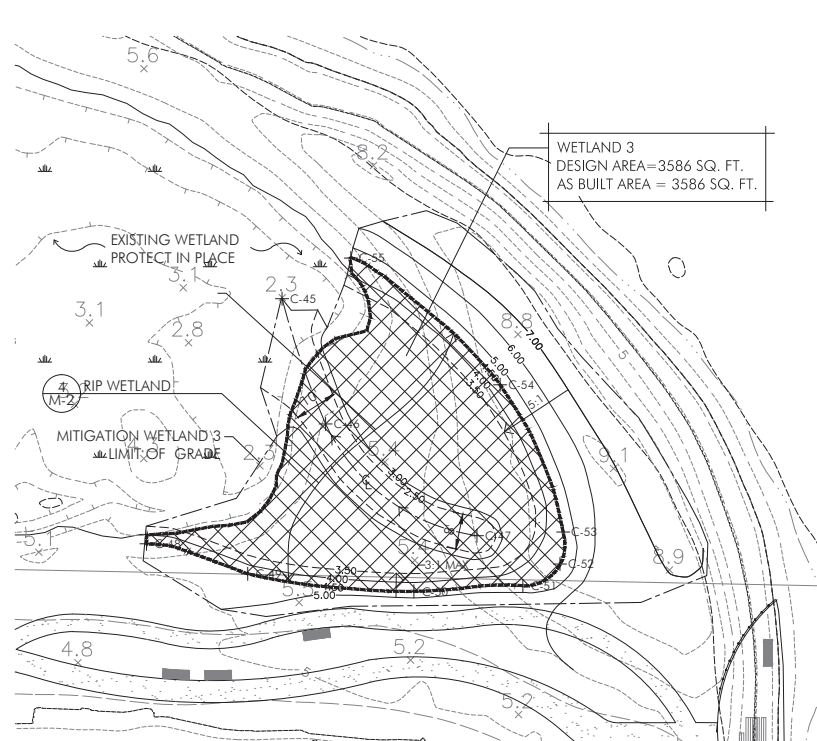
CUT = 1,018 C.Y.  
 FILL = 8 C.Y.  
 NET = 1,010 C.Y. (CUT)  
 TOTAL EARTH MOVED = 1,026 C.Y.

**GRADE STAKING DATA**

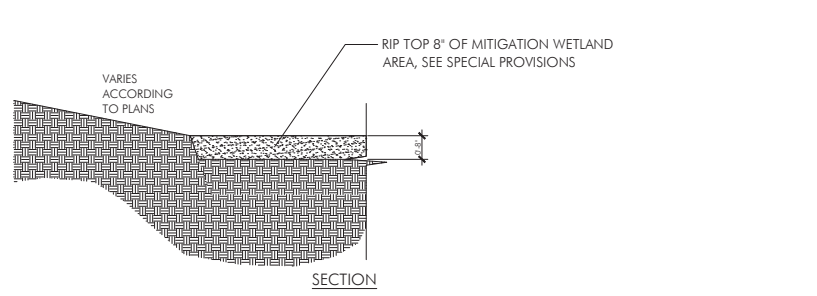
PT. NO.	NORTHING	EASTING
C-1	2183094.09	5991110.18
C-2	2183076.69	5991148.58
C-3	2183042.30	5991208.67
C-4	2183007.24	5991262.38
C-5	2182985.76	5991298.75
C-6	2182959.92	5991325.44
C-7	2182927.20	5991369.67
C-8	2182907.23	5991397.97
C-9	2183028.30	5991127.05
C-10	2183046.24	5991122.76
C-11	2183097.95	5991082.56
C-12	2183107.83	5991080.96
C-13	2183110.72	5991089.76
C-14	2183107.05	5991115.79
C-15	2183106.63	5991131.32
C-16	2183099.18	5991147.42
C-17	2183072.30	5991178.77
C-18	2182911.39	5991256.48
C-19	2182891.09	5991244.48
C-20	2182895.30	5991236.39
C-21	2182888.67	5991231.59
C-22	2182852.49	5991231.38
C-23	2182829.41	5991244.07
C-24	2182807.52	5991265.51
C-25	2182799.56	5991279.78
C-26	2182797.55	5991292.40
C-27	2182813.01	5991312.90
C-28	2182913.03	5991230.13
C-29	2182908.21	5991226.96
C-30	2182906.01	5991221.43
C-31	2182893.78	5991213.59
C-32	2182848.04	5991224.01
C-33	2182810.74	5991242.52
C-34	2182794.53	5991264.23
C-35	2182787.70	5991302.11
C-36	2182791.93	5991309.31
C-37	2182803.34	5991311.77
C-38	2182878.58	5991246.46
C-39	2182875.28	5991240.63
C-40	2182852.58	5991240.06
C-41	2182846.12	5991247.22
C-42	2182839.33	5991250.90
C-43	2182818.75	5991269.19
C-44	2182804.62	5991292.76
C-45	2182788.12	5991755.43
C-46	2182759.64	5991765.34
C-47	2182734.27	5991799.74
C-48	2182732.41	5991724.65
C-49	2182725.59	5991747.63
C-50	2182721.61	5991785.41
C-51	2182722.79	5991810.17
C-52	2182727.82	5991818.61
C-53	2182735.11	5991819.31
C-54	2182768.54	5991804.99
C-55	2182797.35	5991771.06



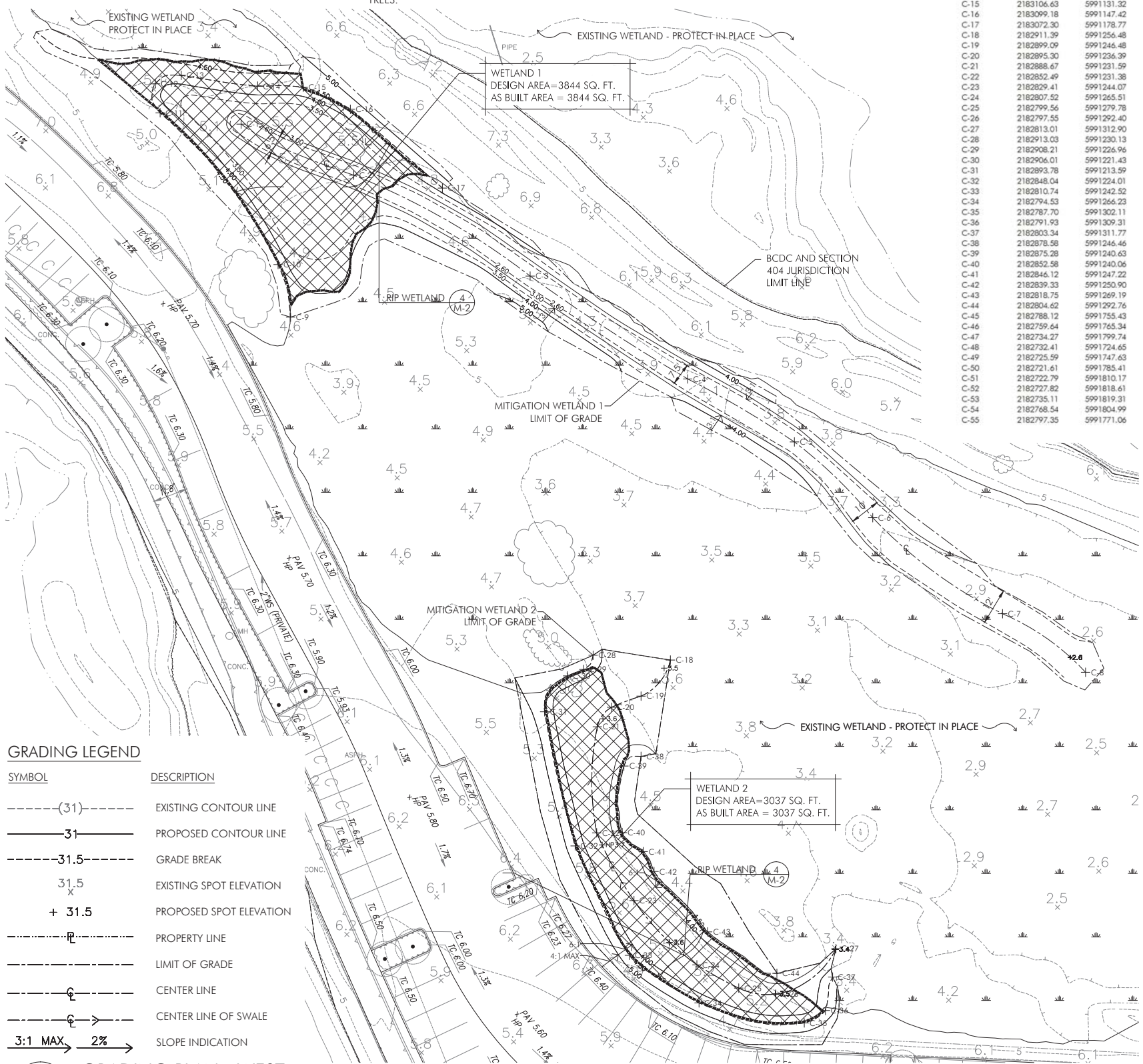
**1 KEY MAP**  
 SCALE: 1" = 100'



**3 GRADING PLAN - EAST**  
 SCALE: 1" = 20'



**4 WETLAND SUBGRADE DETAIL**  
 NOT TO SCALE



**GRADING LEGEND**

SYMBOL	DESCRIPTION
---(31)---	EXISTING CONTOUR LINE
—31—	PROPOSED CONTOUR LINE
---31.5---	GRADE BREAK
31.5	EXISTING SPOT ELEVATION
+ 31.5	PROPOSED SPOT ELEVATION
---	PROPERTY LINE
---	LIMIT OF GRADE
---	CENTER LINE
---	CENTER LINE OF SWALE
3:1 MAX 2%	SLOPE INDICATION

**2 GRADING PLAN - WEST**  
 SCALE: 1" = 20'

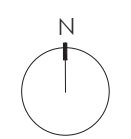
**LOCH LOMOND MARINA**  
 WETLAND MITIGATION PROJECT  
 SAN RAFAEL, CALIFORNIA

**AS-BUILT GRADING PLAN**

09/14/09 | 100% PERMIT SET  
 Date Issues And Revisions No.

PROJECT #12094-2  
 DRAWN BY: MWS, KET  
 CHECKED BY: GJS  
 ORIGINAL DRAWING SIZE: 24 X 36

SCALE: 1" = 20'



Sheet

**FIGURE 3**

*This Page Intentionally Left Blank*

Table 2. Number of Plants in Restored Seasonal Wetlands

Scientific Name Common Name		Seasonal Wetland Mitigation Areas			
		MW1	MW2	MW3	Total
<i>Distichlis spicata</i> Salt Grass	Design Quantity	985	771	256	<b>2012</b>
	As-Built Quantity	985	771	256	<b>2012</b>
<i>Salicornia virginica</i> Pickleweed	Design Quantity	186	138	123	<b>447</b>
	As-Built Quantity	186	138	123	<b>447</b>
<i>Schoenoplectus maritimus</i> Alkali Bulrush	Design Quantity	1322	0	328	<b>1650</b>
	As-Built Quantity	1031	0	256	<b>1287</b>
<b>Total Plants Installed in Each Area</b>		<b>2493</b>	<b>909</b>	<b>707</b>	<b>3746</b>

Table 3. Performance Criteria of Mitigation Wetlands

Success Criterion Number	Success Criteria Description	Year 1	Year 2	Year 3	Year 4	Year 5
#1	The majority of Mitigation Wetlands (MW1-MW3) will be continually inundated for at least specified number weeks.	2	2	2	2	2
#2	The majority of the soils within Mitigation Wetlands (MW1-MW3) will be continually saturated for at least specified number of weeks.	6	6	6	6	6
#3	Invasive plants on the California Invasive Plant Council (Cal-IPC) "A" List will not exceed specified percent cover within mitigation wetlands.	5	5	5	5	5
#4	Total vegetation percent cover in Mitigation Wetlands (MW1-MW3) should average at least specified percent of the Reference site's total vegetation percent cover.	20	30	50	75	85
#5	The percent cover of non-native species within Mitigation Wetlands (MW1-MW3) should not exceed specified percentage of the non-native vegetation percent cover within the Reference Wetlands (RW1-RW3).	150	140	125	110	100
#6	The wetlands mitigation areas will meet the three Corps wetlands criteria (Environmental Laboratory 1987) in YEAR 5.	N/A	N/A	N/A	N/A	Meets

In addition to the wetland performance criteria, this report addresses the management plan as outlined in Section 10.3 of *The Village at Loch Lomond Marina Wetland Mitigation/Monitoring Proposal and Management Plan* (WRA 2005). The management plan calls for annual inspection and as-needed repair of the wetland fence, signage, and erosion; debris removal activities; non-native plant removal; mosquito control; and record keeping.

## 4.0 METHODS

Year 2 monitoring of the Mitigation Wetlands was completed on August 17, 2017. The three wetland parameters of hydrology, soils, and vegetation, were examined to assess progress in creating a successful Mitigation Area. All monitoring was performed by a qualified biologist with experience in wetland mitigation monitoring. Methods for monitoring the performance of the (MW1-MW3) with regards to the performance success criteria are described below.

### 4.1 Hydrology

The hydrology of the Mitigation Wetlands were monitored on January 11, January 20, January 31, February 10, and February 24, 2017 during the rainy season to ensure that the sites are functioning hydrologically as seasonal wetlands. In addition, precipitation and tidal records were analyzed. Based on methodologies in the Corps Wetland Delineation Manual (Environmental Laboratory 1987), reference wetlands (RW1-RW3) and mitigation wetlands (MW1-MW3) were monitored periodically to ensure that soils are either inundated or saturated within the root zone (1.0 foot from the soil surface). Inundation and saturation was monitored using a series of markers installed in MW3 as used as a proxy for the other two Mitigation Wetlands. The markers were installed in a line in 10-foot increments (0 to 60 feet) beginning at the edge of the wetland boundary and leading inwards towards the center of MW3. Saturation was assessed by determining at what distance (0 to 60 feet away from wetland boundary) the root zone ceased to be saturated 1 foot below the soil surface. Inundation was recorded based on the observation of water on the soil surface, and the depth was recorded. Periodic visits were conducted to determine the duration of saturation and inundation. Photographs of mitigation wetlands (MW1-MW3) and reference wetlands (RW1-RW3) were taken from established photo points (see Appendix A and Figure 4) during the hydrology monitoring visits to document hydrologic conditions.

### 4.2 Soils

The Natural Resource Conservation Service (NRCS) defines a hydric soil as:

*“A hydric soil is a soil that formed under conditions of saturation, flooding, or ponding long enough during the growing season to develop anaerobic conditions in the upper part.”*

Federal Register July 13, 1994  
US Department of Agriculture, NRCS

Soils formed over long periods of time under wetland (anaerobic) conditions often possess characteristics that indicate they meet the definition of hydric soils. Hydric soils can have a hydrogen sulfide (rotten egg) odor, low chroma matrix color (generally designated 0, 1, or 2) used to identify them as hydric, presence of redox concentrations, gleyed or depleted matrix, or high



organic matter content.

The Arid West Supplement (Corps 2008) contains a list of 23 hydric soil indicators that are known to occur in the Arid West region. Soils samples can be collected and described according to the methodology provided in the Arid West Supplement (Corps 2008). Soil chroma and values were determined by utilizing a standard Munsell soil color chart (GretagMacbeth 2000). Indicators are not intended to replace or relieve the requirements contained in the definition of a hydric soil. Therefore, a soil that meets the definition of a hydric soil is hydric whether or not it exhibits indicators (Corps 2008).

Because hydric soils from over long time periods, inspection of hydric soils at this early date (Year 2) is not feasible and therefore hydric soils were not specifically analyzed. Instead, the inundation and saturation period thresholds are used to directly observe whether soil is being formed “*under conditions of saturation, flooding, or ponding*”.

In following years, once hydric soil indicators start to appear, hydric soils will be specifically investigated. Hydric soils will be determined to be present if inundation and saturation period thresholds are met or any of the soils samples meet one or more of the 23 hydric soil indicators described in the Arid West Supplement (Corps 2008) and Field Indicators of Hydric Soils in the United States (USDA 2006).

### **4.3 Vegetation**

#### *4.3.1 Vegetation Sample Quadrat Locations*

Mitigation Wetland (MW1-MW3) vegetation transects were positioned within and across the restored wetlands. One transect was placed within each of the three Mitigation Wetland (MW1-MW3). The transects were positioned to capture the breadth of elevations and microhabitats within the wetland with the goal of remaining in place throughout the 10-year monitoring period.

Reference Wetland (RW1-RW3) transects were positioned within existing wetlands to gather baseline data and compare to the performance of the mitigation wetlands. The locations were selected within previously existing wetlands outside of the Mitigation Wetlands area. Reference Wetland transects are located outside of sloughs and are representative of native seasonal wetland species. Reference Wetlands were located as close to each corresponding MW1-MW3 as feasibly possible. Baseline Reference Wetland transects are similar in elevation and approximately the same length as the corresponding Mitigation Wetland transects. Transects are paired as follows: MW1 with RW1, MW2 with RW2, and MW3 with RW3. Locations of the transects are shown in Figure 4.

Ten vegetation sampling quadrats were located within each of the three Mitigation Wetlands (MW1-MW3), and another 10 sampling quadrats were located in each of the three Reference Wetland locations (RW1-RW3). Each sampling quadrat was offset from baseline transects for a total of 60 sample quadrats. The location of each baseline transect is shown in Figure 2. All baseline transects were positioned to avoid sloughs or channels. Metal T-posts were placed at both ends of each baseline transect to ensure comparative purposes across years. The lengths of each transect was designed to capture a variation of elevations across that specific wetland. Table 4 depicts each transect length.

*This Page Left Blank Intentionally*

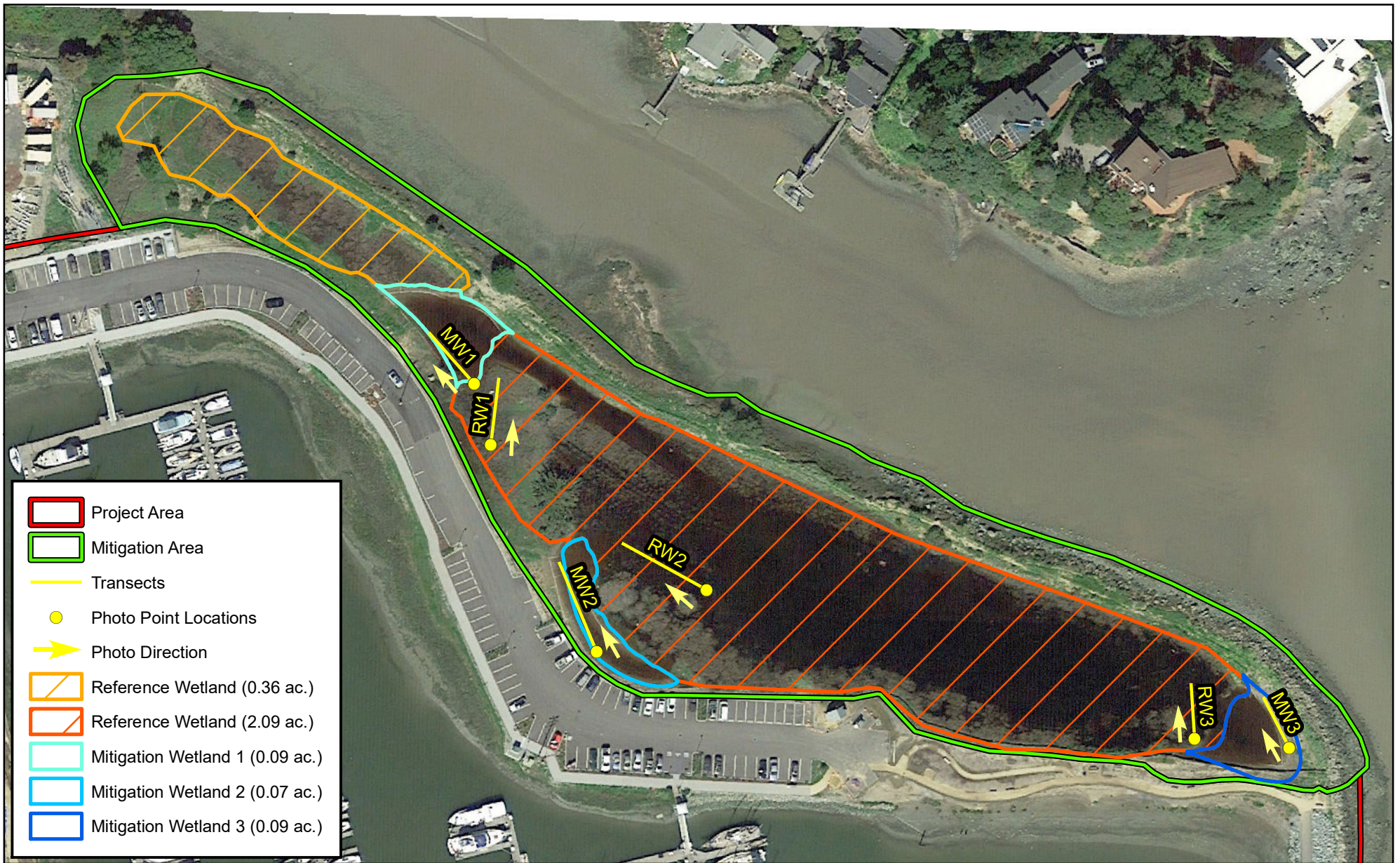
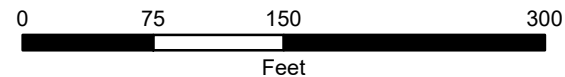


Figure 4. Wetland Monitoring Transects and Photo Point Locations

Loch Lomond  
Marin County, California



ENVIRONMENTAL CONSULTANTS

Map Prepared Date: 12/23/2016  
Map Prepared By: pkoby/larz  
Base Source: Esri Streaming - GE March 16, 2016  
Data Source(s): WRA

*This Page Intentionally Left Blank*

Table 4. Lengths of Wetland Vegetation Transects

Wetland Number	Baseline Transect Length (feet)	
	Mitigation Wetland	Reference Wetland
1	75	75
2	150	150
3	40	40

Intersection transects were used to offset the vegetation sampling quadrats at random distances along the baseline transect. Five random distances along the length of each baseline transect were used to position intersection transects. Each intersection transect was 10 feet long and ran to one side of the baseline transect. Two sample quadrats were placed on each intersection transect using a random number generator. A diagram for placement of sample quadrats is shown in Figure 5.

#### 4.3.2 Vegetation Field Monitoring

Vegetation was monitored in the summer (August 17, 2017) when wetland plant species were identifiable to species level. Additionally, conducting monitoring in the summer captures most plants at the height of their growth period, allowing for the most accurate and informative percent cover estimates.

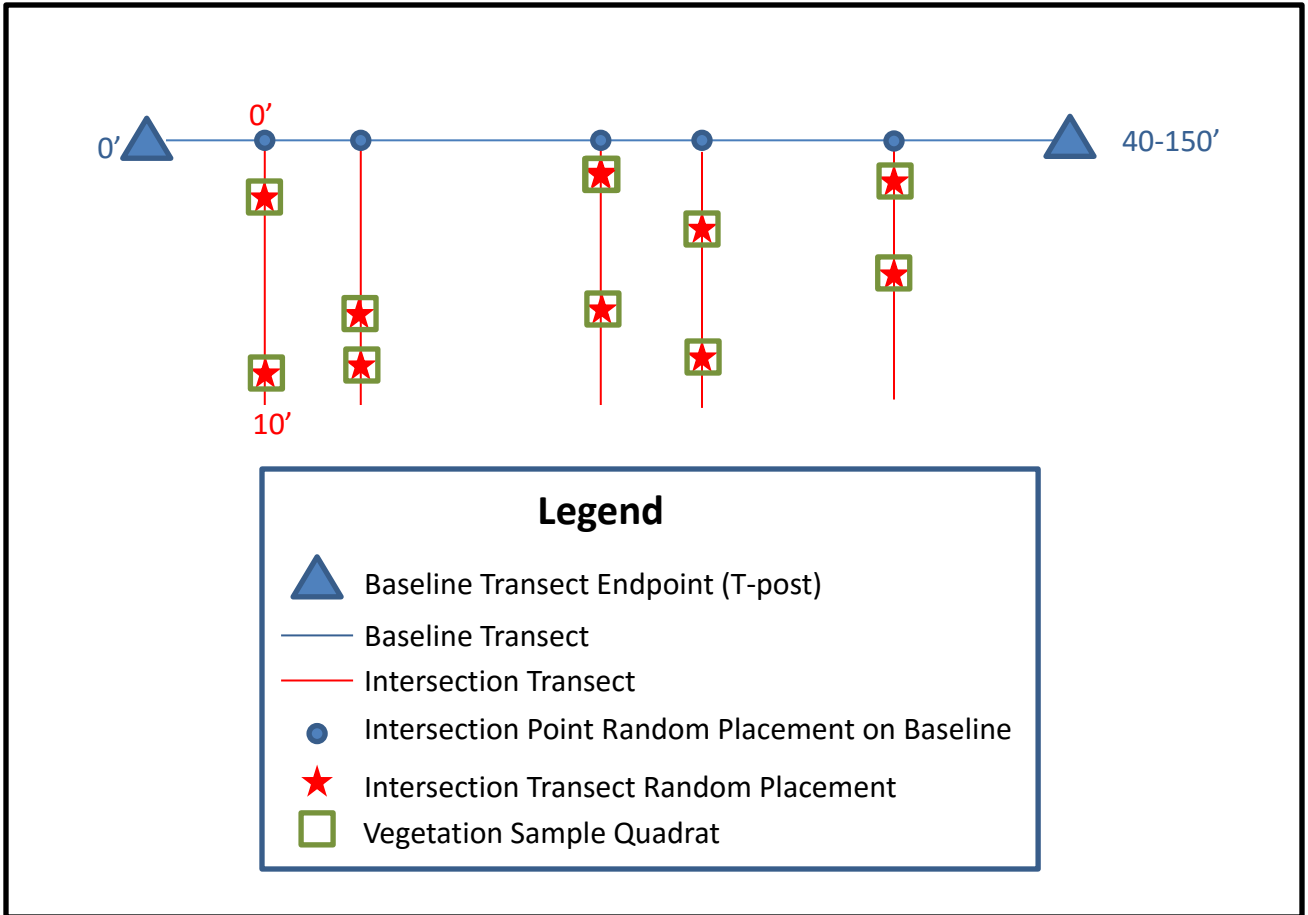
Monitoring was conducted by assessing the cover of each plant species with a 0.25 m<sup>2</sup> (0.5m x 0.5m) quadrat. Percent cover of plant species, bare ground, and litter (i.e., dead vegetative material lying on the soil surface) was estimated visually using the Braun-Blanquet system of cover classes (Table 5).

Table 5. Braun-Blanquet System of Vegetation Cover Classes

Class	Range of Cover (%)	Mean (%)
6	96-100	98.0
5	76-95	85.5
4	51-75	63.0
3	26-50	38.0
2	6-25	15.5
1	1-5	3.0

*This Page Left Blank Intentionally*

Figure 5. Vegetation monitoring transects and sampling quadrats.



*This Page Left Blank Intentionally*



### 4.3.3 Vegetation Data Analysis

The data from the all quadrats in the Mitigation Wetlands (MW1-MW3) were summed to determine an estimate of the percent cover of each plant species over the entire Mitigation Wetland habitat. Similarly, the data from the all quadrats in the Reference Wetland (RW1-RW3) were summed to determine an estimate of the percent cover of each plant species over the entire Reference Wetland habitat. Dominance of the Mitigation Wetlands and Reference Wetlands by wetland vegetation was evaluated by determining the total cover by facultative (FAC), facultative wetland (FACW), and obligate (OBL) plant species as indicated by the National Wetland Plant List (Corps 2016). These data were tabulated and analyzed to assess whether vegetation coverage in Mitigation Wetlands was meeting, or is on-track to meet, the performance criteria goals outlined in Section 3.0.

### 4.4 Photographic Documentation

Visual records are utilized to document changes in the Mitigation Wetlands over the 10-year monitoring period. Photographic reference points were established throughout the Mitigation Wetlands (see Figure 4) and photographs were taken during annual monitoring events as required by Section 6 of the Conditional Water Quality Certification for the Village at Loch Lomond Marina Project, Marin County. Photographs taken at photo points during Year 2 monitoring are shown in Appendix A, Photographs 1-12.

### 4.5 Management Plan

The Loch Lomond Marina Harbormaster is responsible for implementing the management plan for the immediate future. The Harbormaster or his staff regularly (at least weekly) conduct site visits to the Mitigation Wetlands and perform inspections and repairs of the wetland fence, signage, and signs of erosion. The Harbormaster also directs regular debris removal activities, non-native plant removal, and is responsible for the record keeping. The long-term oversight of maintenance and monitoring will be covered by the Mello-Roos District, a geographic area where a parcel tax is imposed in addition to the property tax to provide funding for public works and services. Loch Lomond Marina provides access to the Mitigation Wetlands and allows the Marin/Sonoma Mosquito and Vector Control District (MSMVCD) to conduct mosquito control as necessary.

## 5.0 RESULTS

In Year 2, all three Mitigation Wetlands (MW1-MW3) met the Year 2 success criteria. Planted wetland vegetation within the Mitigation Wetlands has established and is beginning to fill in. Hydrology within the mitigation wetlands was observed to meet the established criteria. The majority of the wetlands were observed to be inundated by approximately 20 inches of water for at least six weeks. The observed percent cover of non-native invasive plants within the mitigation wetlands was 0 percent. No Cal-IPC "A" List species were observed within Mitigation Wetlands. Hydrology, soil, and vegetation data are summarized in the sections below. A summary of the criteria and the results are shown below in Table 6.

### 5.1 Hydrology

Inundation was directly observed weekly within the mitigation wetlands from January 11th until February 24, 2017, a period of six weeks. The mitigation wetlands were inundated for greater than two weeks; therefore, the first success criterion was met. Figure 4 show that the majority of Mitigation Wetlands were inundated on February 24, 2017. The reference wetlands were also observed to be inundated for a period greater than six weeks, but the RWQCB permit does not

require measurements to be recorded for reference wetlands. Also, because inundation was present for more than six weeks, saturation was present in the majority of soils within the Mitigation Wetland for at least six weeks. As a result, the second success criterion for the majority of soils within the mitigation wetlands will be continually saturated for at least six weeks was met.

Records of rainfall on site during January and February 2017 totaled 35.96 inches. In addition, king tides overtopped the levees into the wetland multiple times in December 2016 and January and February 2017. An additional 4.4 inches of precipitation occurred in March, and another 5.16 inches fell in April. Therefore, it is

Table 6. Summary of Success Criteria and Criteria Results

Year 2 Success Criteria	Year Two	Mitigation Wetland Result	Reference Wetland Result	Comparison	Criterion Met
Criterion #1	Continually inundated for at least 2 weeks.	> 4 weeks	> 4 weeks	NA	Yes
Criterion #2	Saturation for at least 6 weeks.	> 6 weeks	> 6 weeks	NA	Yes
Criterion #3	Invasive plants < 5 percent cover	0.0 %	0.02 %	NA	Yes
Criterion #4	Vegetation percent cover > 30 percent of the Reference Wetland	29.00 %	76.00 %	38.16 %	Yes
Criterion #5	non-native species percent cover < 140 percent of the Reference Wetland	3.66%	2.66 %	138 %	Yes

## 5.2 Soils

Wetland soil indicators, including redoximorphic features, can take many years to develop in established or rehabilitated wetlands, and may not become apparent within the first 5 years following restoration. If hydric soil indicators are not observed during monitoring visits, the presence of hydric soils may be presumed in early years of monitoring because it takes time for these indicators to develop in previously non-wetland soils. The National Technical Committee for Hydric Soils (NTCHS) defines hydric soils, in part, by the degree of ponding; therefore, hydrology data on the presence of ponding may partially represent the presence of hydric soils in the mitigation wetlands in early years. If the mitigation wetlands fail to meet the hydrology success criterion by the end of the 10 year monitoring period, soil samples will be taken to analyze compaction and soil texture in order to assess whether or not the wetland grading needs modification.

### **5.3 Vegetation**

In Year 2, the vegetation cover across the Mitigation Wetlands was 29 percent. Total vegetation cover within the Reference Wetland was 76 percent. Total vegetation percent cover in the mitigation wetlands is 38.16 percent of that within the reference wetlands. Total vegetation cover is 8.16 percent higher than the fourth success criterion; therefore the fourth success criterion is met. No upland plant species were observed within the Mitigation Wetlands.

The total cover of invasive plants on the California Invasive Plant Council (Cal-IPC) "A" list within the Mitigation Wetland was 0 percent. This is less than the 5 percent maximum for the third success criterion. Therefore, the third success criterion is met. Percent cover of non-natives within the mitigation wetlands was 138 percent of the percent of non-natives within the reference wetlands. This is 2 percent lower than the 140 percent requirement, and therefore the fifth success criterion was met.

### **5.4 Management Plan**

The Loch Lomond Harbormaster performed or oversaw the tasks conducted as specified in the Management Plan. Regular inspections were conducted throughout 2017 for the wetland fence, signage, debris, and signs of erosion. WRA also performed these same inspections during wetland and vegetation monitoring (see Appendix D). No deficiencies in fencing or signage were observed. No erosional features were observed. Minor amounts of debris were observed within the Mitigation Wetlands throughout the year, due to the numerous King Tides. Extensive non-native vegetation within the Mitigation Wetlands was not observed, although non-native vegetation was observed to an extent that warrants removal in the wetland buffers and upland areas adjacent to Mitigation Wetlands. Records of inspection are on file with the Loch Lomond Harbormaster and those conducted by WRA are included in Appendix D.

The MSMVCD staff visited the site at least once per month from January through July 2017. The site was treated with larvicide in January 2017.

## **6.0 DISCUSSION AND RECOMMENDATIONS**

The Project is currently meeting all five of the Year 2 success criteria. A summary of the success of the Mitigation Wetlands for the Year 2 monitoring period is presented in Table 6 above. A discussion of how the Mitigation Wetlands are meeting performance criteria for each of the five monitoring metrics is provided below. Recommended corrective actions are provided in Section 6.4.

### **6.1 Hydrology**

Year 2 hydrology monitoring data show that the Mitigation Wetlands experienced inundation for approximately four weeks and inundation occurred for much longer. The long inundation periods were due to the extreme precipitation that Year 2 experienced, as well as tides that were higher than predicted due to increase San Francisco Delta outflows. The Mitigation Wetlands have been built with the correct elevations and are receiving adequate hydrology from precipitation and tidal inundations.

### **6.2 Soils**

Specific soil characteristics monitoring was not conducted during Year 2. Wetland soil indicators, including redoximorphic features, can take many years to develop in established or rehabilitated

wetlands, and may not become apparent within the first five years following restoration. Due to the amount of grading within the mitigation wetlands during construction, wetland soil indicators are not expected to be observable in Year 2. However, due to the amount of observed inundation during the wet season in 2017, it is expected some wetland soil indicators are starting to form.

### **6.3 Vegetation**

The Mitigation Wetlands met the Year 2 vegetative success criteria (criteria #3, #4, and #5). Vegetation within the Mitigation Wetlands has established. Total vegetation cover within mitigation wetlands is moderate, with a fair amount of algal matting and bare ground present. This may be a result of the extended period of inundation observed within all the mitigation wetlands in the early spring, which was likely caused by flooding from an extreme wet year and tides that were higher than predicted. Many of the plants installed in late 2015, were submerged underwater for approximately 6 weeks. The Mitigation Wetlands were inundated long enough for significant amounts of algae (bio-crust when dried) to grow and later blanket the majority of the mitigation wetlands. There are very few non-natives within the mitigation wetlands. However, there are moderate amounts of black mustard, radish, and perennial pepperweed adjacent the mitigation wetlands within the upland buffer areas.

### **6.4 Recommendations**

Hydrology within the mitigation wetlands should continue to be monitored regularly during the rainy season in Year 3 in order to ensure success criteria #1 and #2 are on track to meet the Year 3 targets. Irrigation was used in the mitigation wetlands to supplement planting growth during the first year of establishment. WRA does not recommend using irrigation in Year 3 due to the prediction of two king tides during the summer that will over-top the berm and inundate the wetland areas. Should drought conditions occur in future years, irrigation of the mitigation wetlands should commence again. In addition, WRA recommends that weeds, such as black mustard, radish, and perennial pepperweed continue to be monitored and managed throughout the mitigation wetlands in order to provide additional habitat for the growth, expansion, and recruitment of native wetland plant species. Invasive and non-native species removal within the Mitigation Wetlands and adjacent areas is recommended for spring 2018. In addition, the minor amounts of trash within the Mitigation Wetlands should be removed. The Project is currently meeting all Year 2 success criteria, and therefore no further recommendations are being provided at this time.

## 7.0 REFERENCES

- California Invasive Plant Council (Cal-IPC). 2017. California Invasive Plant Inventory Database. California Invasive Plant Council, Berkeley, CA. Available at: <http://www.cal-ipc.org/ip/inventory/index.php>.
- [Corps] United States Army Corps of Engineers. 2016. National Wetland Plant List. Available at: <http://rsgisias.crrel.usace.army.mil/NWPL/>.
- [Corps] United States Army Corps of Engineers. 2008. Regional Supplement to the Corps of Engineers Wetland Delineation Manual: Arid West Region. May 2008.
- Environmental Laboratory. 1987. Corps of Engineers Wetlands Delineation Manual. Department of the Army, Waterways Experiment Station, Vicksburg, Mississippi 39180-0631.
- GretagMacBeth. 2000. Munsell Soil Color Charts, revised washable edition.
- [USDA] U.S. Department of Agriculture, Natural Resources Conservation Service (NRCS). 2010. Field Indicators of Hydric Soils in the United States: A Guide for Identifying and Delineating Hydric Soils, Version 7.0, 2010.
- [USDA] U.S. Department of Agriculture,, Natural Resources Conservation Service. 2006. Field Indicators of Hydric Soils in the United States: A Guide for Identifying and Delineating Hydric Soils, Version 6.0. In cooperation with the National Technical Committee for Hydric Soils, U.S. Army Corps of Engineers.
- [WRA] WRA, Inc. 2005. Wetland Mitigation/Monitoring Proposal and Management Plan: The Village at Loch Lomond Marina. June .
- [WRA] WRA, Inc. 2009. Wetland Mitigation Landscape Design Plans. August 14.

*This Page Left Blank Intentionally*

**APPENDIX A**  
**REPRESENTATIVE SITE PHOTOGRAPHS**

*This Page Left Blank Intentionally*





Photograph 1. Year 1: View (facing north) of the baseline transect within Mitigation Wetland MW1. July 27, 2016.



Photograph 2. Year 2: View (facing north) of the baseline transect within Mitigation Wetland MW1. August 17, 2017.



Photograph 3. Year 1: View (facing northwest) of the baseline transect within Mitigation Wetland (MW2). July 27, 2016.



Photograph 4. Year 2: View (facing northwest) of the baseline transect within Mitigation Wetland (MW2). August 17, 2017.



Photograph 5. Year 1: View (facing northwest) of the baseline transect within Mitigation Wetland MW3. July 27, 2016.



Photograph 6. Year 2: View (facing northwest) of the baseline transect within Mitigation Wetland MW3. August 17, 2017.



Photograph 7. Year 1: View (facing northeast) of the baseline transect within Reference Wetland at RW1. July 27, 2016.



Photograph 8. Year 2: View (facing southwest) of the baseline transect within Reference Wetland at RW1. August 17, 2017.



Photograph 9. Year 1: View (facing west) of the baseline transect within Reference Wetland RW2. July 27, 2016.



Photograph 10. Year 2: View (facing west) of the baseline transect within Reference Wetland RW2. August 17, 2017.



Photograph 11. Year 1: View (facing south) of the baseline transect within Reference Wetland RW3. July 27, 2016.



Photograph 12. Year 2: View (facing south) of the baseline transect within Reference Wetland RW3. October 16, 2017.



Photograph 13. View of inundation within Mitigation Wetland MW1 on 05/01/2017.



Photograph 14. View of inundation within Mitigation Wetland MW2 on 05/01/2017.



Photograph 15. View of inundation within Mitigation Wetland MW3 on 05/01/2017.



Photograph 16. View of inundation within Mitigation Wetland MW3 on 02/10/2017.



**APPENDIX B**  
**VEGETATION MONITORING RESULTS**

*This Page Left Blank Intentionally*

SPECIES	Common Name	indicator	n=native i=invasive x=exotic	Average Cover by Species Mitigation Wetlands	Average Cover by Species Existing Wetlands	Percent Cover of Mitigation Wetlands Compared to Existing Wetlands	Percent Cover of Non-Natives in Mitigation Wetland	Percent Cover of Non-Natives in Existing Wetland	Percent Cover of non-natives within Mitigation Wetlands Compared to Existing Wetlands	Percent Cover of Invasive Plants within Mitigation Wetlands	Percent Cover of Invasive Plants within Existing Wetlands	Average Percent Cover
<i>Anagallis arvensis</i>	scarlet pimpernel	FAC	x	0	0	-	0	0	-	-	152	=
<i>Anthemis cotula</i>	stinking chamomile	FACU	i	0	0	-	0	0	-	0	0	
<i>Avena sp.</i>	wild oats	NI	x	0	0	-	0	0	-	-	-	
<i>Baccharis glutinosa</i>	salt marsh baccharis	FACW	n	0	0	-	-	-	-	-	-	
<i>Baccharis pilularis</i>	coyote brush	NL	n	0	0	-	-	-	-	-	-	
<i>Bolboschoenus maritimus</i>	alkali bulrush	OBL	n	36	0	-	36	0	-	-	-	
<i>Brassica nigra</i>	black mustard	NL	i	0	0	-	0	0	-	0	0	
<i>Bromus hordeaceus</i>	soft chess	NI	x	0	0	-	0	0	-	-	-	
<i>Chenopodium atropost</i>	lamb's quarters	FAC	i	5	152	-	5	152	-	5	152	
<i>Convolvulus arvensis</i>	field bindweed	NI	x	0	0	-	0	0	-	-	-	
<i>Crypsis schoenoides</i>	swamp grass	OBL	x	0	0	-	0	0	-	-	-	
<i>Cyperus eragrostis</i>	umbrella sedge	FACW	n	0	0	-	-	-	-	-	-	
<i>Distichlis spicata</i>	salt grass	FACW	n	1	71	-	-	-	-	-	-	
<i>Ditrichia graveolens</i>	stinkwort	UPL	x	0	32	-	0	32	-	-	-	
<i>Elymus glauca</i>	blue wildrye	FACU	n	0	0	-	-	-	-	-	-	
<i>Epiobium ciliatum</i>	willow herb	FACW	n	0	0	-	-	-	-	-	-	
<i>Eremocarpus setigerus</i>	turkey mullein	NI	n	0	0	-	-	-	-	-	-	
<i>Erodium sp.</i>	filaree	NI	x	0	0	-	0	0	-	-	-	
<i>Festuca perennis</i>	Italian ryegrass	FAC*	i	0	0	-	0	0	-	0	0	
<i>Frankenia salina</i>	alkali heath	FACW	n	0	0	-	-	-	-	-	-	
<i>Geranium sp.</i>	geranium	NI	x	0	0	-	0	0	-	-	-	
<i>Grindelia stricta</i>	marsh gumplant	FACW	n	0	0	-	-	-	-	-	-	
<i>Helminthotheca echioides</i>	prickly ox tongue	FAC	x	0	0	-	0	0	-	-	-	
<i>Hordeum brachyantherum</i>	meadow barley	FACW	n	0	0	-	-	-	-	-	-	
<i>Hordeum marinum</i>	Mediterranean barley	FAC	x	0	0	-	0	0	-	-	-	
<i>Hordeum murinum</i>	foxtail barley	NI	x	0	0	-	0	0	-	-	-	
<i>Juncus bufonius</i>	toad rush	FACW+	n	0	0	-	-	-	-	-	-	
<i>Juncus balticus</i>	baltic rush	OBL	n	0	0	-	-	-	-	-	-	
<i>Juncus effusus</i>	common bog rush	FACW+/ OBL	n	0	0	-	-	-	-	-	-	
<i>Juncus mexicanus</i>	Mexican rush	FACW	n	0	0	-	-	-	-	-	-	
<i>Juncus patens</i>	spreading rush	FAC	n	0	0	-	-	-	-	-	-	
<i>Juncus xiphioides</i>	iris-leaved rush	OBL	n	0	0	-	-	-	-	-	-	
<i>Lactuca serriola</i>	prickly wild lettuce	FAC	x	0	0	-	0	0	-	-	-	
<i>Lasthenia glabrata</i>	goldfields	FACW	n	0	0	-	-	-	-	-	-	
<i>Limonium californicum</i>	marsh lavender	OBL	n	0	0	-	-	-	-	-	-	
<i>Lythrum hyssopifolia</i>	loosestrife	FACW	x	0	0	-	0	0	-	-	-	
<i>Malva nicaeensis</i>	bull mallow	UPL	x	0	0	-	0	0	-	-	-	
<i>Medicago polymorpha</i>	California bur clover	NI	x	0	0	-	0	0	-	-	-	
<i>Melilotus indica</i>	Indian sweetclover	FAC	x	0	0	-	0	0	-	-	-	
<i>Poa annua</i>	annual bluegrass	FACW-	x	0	0	-	0	0	-	-	-	
<i>Polygonum aviculare</i>	knotweed	FAC	x	0	0	-	0	0	-	-	-	
<i>Polygonum monspeliensis</i>	rabbitfoots grass	FACW+	x	88	2	-	88	2	-	-	-	
<i>Rumex crispus</i>	curly dock	FACW-	x	0	0	-	0	0	-	-	-	
<i>Salicornia pacifica</i>	pickleweed	OBL	n	123	1282	-	-	-	-	-	-	
<i>Salsola tragus</i>	prickly russian thistle	FACU	i	0	0	-	0	0	-	0	0	
<i>Schoenoplectus americanus</i>	chairmaker's bulrush	OBL	n	0	0	-	-	-	-	-	-	
<i>Schoenoplectus pungens var. longispicatus</i>	common three square	ONL	n	0	0	-	-	-	-	-	-	
<i>Silybum marianum</i>	milk thistle	NI	x	0	0	-	0	0	-	-	-	
<i>Spergularia rubra</i>	purple sand spurry	FAC-	x	0	0	-	0	0	-	-	-	
<i>Taeniatherum caput-medusae</i>	medusa head	NI	i	0	0	-	0	0	-	0	0	
<i>Trifolium dubium</i>	shamrock clover	FACU	x	0	0	-	0	0	-	-	-	
<i>Trifolium hirtum</i>	rose clover	NL	i	0	0	-	0	0	-	0	0	
<i>Lotus corniculatus</i>	bird's foot trefoil	FAC	x	4	6	-	4	6	-	-	-	
Rock				32	9	-	-	9	-	-	-	
Biocrust				996	0	-	-	0	-	-	-	
Litter and Thatch				410	950	-	-	950	-	-	-	
Bare ground				907	0	-	907	0	-	-	-	
Total Cover				0	950	-	0	-	-	-	-	
Average Cover				8.56666667	51.5	0.166343042	133	192	0.692708333	0		

SPECIES	Common Name	indicator	n=native i=invasive x=exotic	Line 1		Line 2		Line 3		Line 4		Line 5	
				1	2	3	4	5	6	7	8	9	10
<i>Anagallis arvensis</i>	scarlet pimpernel	FAC	x										
<i>Anthemis cotula</i>	stinking chamomile	FACU	i										
<i>Avena sp.</i>	wild oats	NI	x										
<i>Baccharis glutinosa</i>	salt marsh baccharis	FACW	n										
<i>Baccharis pilularis</i>	coyote brush	NL	n										
<i>Bolboschoenus maritimus</i>	alkali bulrush	OBL	n	1	1			2		2		+	
<i>Brassica nigra</i>	black mustard	NL	l										
<i>Bromus hordeaceus</i>	soft chess	NI	x										
<i>Chenopodium atropost</i>	lamb's quarters	FAC	i										
<i>Convolvulus arvensis</i>	field bindweed	NI	x										
<i>Cyperus eragrostis</i>	umbrella sedge	FACW	n										
<i>Distichlis spicata</i>	salt grass	FACW	n						5				
<i>Dittrichia graveolens</i>	stinkwort	UPL	x										
<i>Elymus glauca</i>	blue wildrye	FACU	n										
<i>Epilobium ciliatum</i>	willow herb	FACW	n										
<i>Eremocarpus setigerus</i>	turkey mullein	NI	n										
<i>Erodium sp.</i>	filaree	NI	x										
<i>Festuca perennis</i>	Italian ryegrass	FAC*	i										
<i>Frankenia salina</i>	alkali heath	FACW	n										
<i>Geranium sp.</i>	geranium	NI	x										
<i>Grindelia stricta</i>	marsh gumplant	FACW	n										
<i>Helminthotheca echioides</i>	prickly ox tongue	FAC	x										
<i>Hordeum brachyantherum</i>	meadow barley	FACW	n										
<i>Hordeum marinum</i>	Mediterranean barley	FAC	x										
<i>Hordeum murinum</i>	foxtail barley	NI	x										
<i>Juncus bufonius</i>	toad rush	FACW+	n										
<i>Juncus balticus</i>	baltic rush	OBL	n										
<i>Juncus effusus</i>	common bog rush	FACW+/OBL	n										
<i>Juncus mexicanus</i>	Mexican rush	FACW	n										
<i>Juncus patens</i>	spreading rush	FAC	n										
<i>Juncus xiphioides</i>	iris-leaved rush	OBL	n										
<i>Lactuca serriola</i>	prickly wild lettuce	FAC	x										
<i>Lasthenia glabrata</i>	goldfields	FACW	n										
<i>Limonium californicum</i>	marsh lavender	OBL	n										
<i>Lythrum hyssopifolia</i>	loosestrife	FACW	x										
<i>Malva nicaeensis</i>	bull mallow	UPL	x										
<i>Medicago polymorpha</i>	California bur clover	NI	x										
<i>Melilotus indica</i>	Indian sweetclover	FAC	x										
<i>Poa annua</i>	annual bluegrass	FACW-	x										
<i>Polygonum aviculare</i>	knotweed	FAC	x										
<i>Polypogon monspeliensis</i>	rabbitfoots grass	FACW+	x	25	12		10	25	40	10	45	5	15
<i>Rumex crispus</i>	curly dock	FACW-	x										
<i>Salicornia pacifica</i>	pickleweed	OBL	n	1	8	2	10	4	4	5	6	5	5
<i>Salsola tragus</i>	prickly russian thistle	FACU	i										
<i>Schoenoplectus americanus</i>	chairmaker's bulrush	OBL	n										
<i>Schoenoplectus pungens</i> var. <i>longispicatus</i>	common three square	ONL	n										
<i>Silybum marianum</i>	milk thistle	NI	x										
<i>Spergularia rubra</i>	purple sand spurry	FAC-	x										
<i>Taeniatherum caput-medusae</i>	medusa head	NI	i										
<i>Trifolium dubium</i>	shamrock clover	FACU	x										
<i>Trifolium hirtum</i>	rose clover	NL	l										
<i>Lotus corniculatus</i>	bird's foot trefoil	FAC	x		4								

Rock						10	2						
Biocrust								40			49		
Litter and Thatch				50	20				51	83			
Bare ground				25	55	88	67	29				90	80
Transect #s				70	70	13	13	67	67	73	73	15	15
Line #s				9	1	7	4	8	10	5	10	8	3

Notes: Line 2 facing north. Trans length 80 feet.

All blank spaces denote a value of 0.

SPECIES	Common Name	indicator	n=native i=invasive x=exotic	Line 1		Line 2		Line 3		Line 4		Line 5	
				1	2	3	4	5	6	7	8	9	10
<i>Anagallis arvensis</i>	scarlet pimpernel	FAC	x										
<i>Anthemis cotula</i>	stinking chamomile	FACU	i										
<i>Avena sp.</i>	wild oats	NI	x										
<i>Baccharis glutinosa</i>	salt marsh baccharis	FACW	n										
<i>Baccharis pilularis</i>	coyote brush	NL	n										
<i>Bolboschoenus maritimus</i>	alkali bulrush	OBL	n										
<i>Brassica nigra</i>	black mustard	NL	l										
<i>Bromus hordeaceus</i>	soft chess	NI	x										
<i>Chenopodium atropost</i>	lamb's quarters	FAC	i	10	10	30	20	2	2	4	1	10	10
<i>Convolvulus arvensis</i>	field bindweed	NI	x										
<i>Crypsis schoenoides</i>	swamp grass	OBL	x										
<i>Cyperus eragrostis</i>	umbrella sedge	FACW	n										
<i>Distichlis spicata</i>	salt grass	FACW	n	40						70	1		
<i>Dittrichia graveolens</i>	stinkwort	UPL	x										30
<i>Elymus glauca</i>	blue wildrye	FACU	n										
<i>Epilobium ciliatum</i>	willow herb	FACW	n										
<i>Eremocarpus setigerus</i>	turkey mullein	NI	n										
<i>Erodium sp.</i>	filaree	NI	x										
<i>Festuca perennis</i>	Italian ryegrass	FAC*	i										
<i>Frankenia salina</i>	alkali heath	FACW	n										
<i>Geranium sp.</i>	geranium	NI	x										
<i>Grindelia stricta</i>	marsh gumplant	FACW	n										
<i>Helminthotheca echioides</i>	prickly ox tongue	FAC	x										
<i>Hordeum brachyantherum</i>	meadow barley	FACW	n										
<i>Hordeum marinum</i>	Mediterranean barley	FAC	x										
<i>Hordeum murinum</i>	foxtail barley	NI	x										
<i>Juncus bufonius</i>	toad rush	FACW+	n										
<i>Juncus balticus</i>	baltic rush	OBL	n										
<i>Juncus effusus</i>	common bog rush	FACW+/OBL	n										
<i>Juncus mexicanus</i>	Mexican rush	FACW	n										
<i>Juncus patens</i>	spreading rush	FAC	n										
<i>Juncus xiphioides</i>	iris-leaved rush	OBL	n										
<i>Lactuca serriola</i>	prickly wild lettuce	FAC	x										
<i>Lasthenia glabrata</i>	goldfields	FACW	n										
<i>Limonium californicum</i>	marsh lavender	OBL	n										
<i>Lythrum hyssopifolia</i>	loosestrife	FACW	x										
<i>Malva nicaeensis</i>	bull mallow	UPL	x										
<i>Medicago polymorpha</i>	California bur clover	NI	x										
<i>Melilotus indica</i>	Indian sweetclover	FAC	x										
<i>Poa annua</i>	annual bluegrass	FACW-	x										
<i>Polygonum aviculare</i>	knotweed	FAC	x										
<i>Polypogon monspeliensis</i>	rabbitfoots grass	FACW+	x					2					
<i>Rumex crispus</i>	curly dock	FACW-	x										
<i>Salicornia pacifica</i>	pickleweed	OBL	n	20	40	55	40	88	81	4	93	50	20
<i>Salsola tragus</i>	prickly russian thistle	FACU	i										
<i>Schoenoplectus americanus</i>	chairmaker's bulrush	OBL	n										
<i>Schoenoplectus pungens</i> var. <i>longispicatus</i>	common three square	ONL	n										
<i>Silybum marianum</i>	milk thistle	NI	x										
<i>Spergularia rubra</i>	purple sand spurry	FAC-	x										
<i>Taeniatherum caput-medusae</i>	medusa head	NI	i										
<i>Trifolium dubium</i>	shamrock clover	FACU	x										
<i>Trifolium hirtum</i>	rose clover	NL	l										
<i>Lotus corniculatus</i>		FAC	x			1		1					4
<i>Eleocharis spp.</i>				2	4					2		20	
Rock													
Biocrust													
Litter and Thatch				15	61	10	30	5	15	20	5	20	36
Bare ground				15	5	5	10	2	2				
Transect #'s				27	27	17	17	14	14	42	42	34	34
Line #'s				10	5	6	8	8	2	7	9	3	5

Notes: Lines facing west  
All blank spaces denote a value of 0.

SPECIES	Common Name	indicator	n=native i=invasive x=exotic	Line 1		Line 2		Line 3		Line 4		Line 5	
				1	2	3	4	5	6	7	8	9	10
<i>Anagallis arvensis</i>	scarlet pimpernel	FAC	x										
<i>Anthemis cotula</i>	stinking chamomile	FACU	i										
<i>Avena sp.</i>	wild oats	NI	x										
<i>Baccharis glutinosa</i>	salt marsh baccharis	FACW	n										
<i>Baccharis pilularis</i>	coyote brush	NL	n										
<i>Bolboschoenus maritimus</i>	alkali bulrush	OBL	n										
<i>Brassica nigra</i>	black mustard	NL	l										
<i>Bromus hordeaceus</i>	soft chess	NI	x										
<i>Chenopodium atropost</i>	lamb's quarters	FAC	i			5	20				32		
<i>Convolvulus arvensis</i>	field bindweed	NI	x										
<i>Crypsis schoenoides</i>	swamp grass	OBL	x										
<i>Cyperus eragrostis</i>	umbrella sedge	FACW	n										
<i>Distichlis spicata</i>	salt grass	FACW	n										
<i>Dittrichia graveolens</i>	stinkwort	UPL	x				2						
<i>Elymus glauca</i>	blue wildrye	FACU	n										
<i>Epilobium ciliatum</i>	willow herb	FACW	n										
<i>Eremocarpus setigerus</i>	turkey mullein	NI	n										
<i>Erodium sp.</i>	filaree	NI	x										
<i>Festuca perennis</i>	Italian ryegrass	FAC*	i										
<i>Frankenia salina</i>	alkali heath	FACW	n										
<i>Geranium sp.</i>	geranium	NI	x										
<i>Grindelia stricta</i>	marsh gumplant	FACW	n										
<i>Helminthotheca echioides</i>	prickly ox tongue	FAC	x										
<i>Hordeum brachyantherum</i>	meadow barley	FACW	n										
<i>Hordeum marinum</i>	Mediterranean barley	FAC	x										
<i>Hordeum murinum</i>	foxtail barley	NI	x										
<i>Juncus bufonius</i>	toad rush	FACW+	n										
<i>Juncus balticus</i>	baltic rush	OBL	n										
<i>Juncus effusus</i>	common bog rush	FACW+/OBL	n										
<i>Juncus mexicanus</i>	Mexican rush	FACW	n										
<i>Juncus patens</i>	spreading rush	FAC	n										
<i>Juncus xiphioides</i>	iris-leaved rush	OBL	n										
<i>Lactuca serriola</i>	prickly wild lettuce	FAC	x										
<i>Lasthenia glabrata</i>	goldfields	FACW	n										
<i>Limonium californicum</i>	marsh lavender	OBL	n										
<i>Lythrum hyssopifolia</i>	loosestrife	FACW	x										
<i>Malva nicaeensis</i>	bull mallow	UPL	x										
<i>Medicago polymorpha</i>	California bur clover	NI	x										
<i>Melilotus indica</i>	Indian sweetclover	FAC	x										
<i>Poa annua</i>	annual bluegrass	FACW-	x										
<i>Polygonum aviculare</i>	knotweed	FAC	x										
<i>Polygogon monspeliensis</i>	rabbitfoots grass	FACW+	x										
<i>Rumex crispus</i>	curly dock	FACW-	x										
<i>Salicornia pacifica</i>	pickleweed	OBL	n	40	30	10	1	92	85	80	2	80	35
<i>Salsola tragus</i>	prickly russian thistle	FACU	i										
<i>Schoenoplectus americanus</i>	chairmaker's bulrush	OBL	n										
<i>Schoenoplectus pungens</i> var. <i>longispicatus</i>	common three square	ONL	n										
<i>Silybum marianum</i>	milk thistle	NI	x										
<i>Spergularia rubra</i>	purple sand spurry	FAC-	x										
<i>Taeniatherum caput-medusae</i>	medusa head	NI	i										
<i>Trifolium dubium</i>	shamrock clover	FACU	x										
<i>Trifolium hirtum</i>	rose clover	NL	l										
Rock													
Biocrust													
Litter and Thatch				60	70	85	77	8	15	15	58	20	65
Bare ground											5	5	
Transect #'s				46	46	23	23	14	14	39	39	78	78
Line #'s				7	4	10	9	5	4	2	8	3	5

Notes: Line at southside of quad  
All blank spaces denote a value of 0.

SPECIES	Common Name	indicator	n=native i=invasive x=exotic	Line 1		Line 2		Line 3		Line 4		Line 5	
				1	2	3	4	5	6	7	8	9	10
<i>Anagallis arvensis</i>	scarlet pimpernel	FAC	x										
<i>Anthemis cotula</i>	stinking chamomile	FACU	i										
<i>Avena sp.</i>	wild oats	NI	x										
<i>Baccharis glutinosa</i>	salt marsh baccharis	FACW	n										
<i>Baccharis pilularis</i>	coyote brush	NL	n										
<i>Bolboschoenus maritimus</i>	alkali bulrush	OBL	n										
<i>Brassica nigra</i>	black mustard	NL	l										
<i>Bromus hordeaceus</i>	soft chess	NI	x										
<i>Chenopodium atropost</i>	lamb's quarters	FAC	i	1	1	5							
<i>Convolvulus arvensis</i>	field bindweed	NI	x										
<i>Crypsis schoenoides</i>	swamp grass	OBL	x										
<i>Cyperus eragrostis</i>	umbrella sedge	FACW	n										
<i>Distichlis spicata</i>	salt grass	FACW	n										
<i>Dittrichia graveolens</i>	stinkwort	UPL	x										
<i>Elymus glauca</i>	blue wildrye	FACU	n										
<i>Epilobium ciliatum</i>	willow herb	FACW	n										
<i>Eremocarpus setigerus</i>	turkey mullein	NI	n										
<i>Erodium sp.</i>	filaree	NI	x										
<i>Festuca perennis</i>	Italian ryegrass	FAC*	i										
<i>Frankenia salina</i>	alkali heath	FACW	n										
<i>Geranium sp.</i>	geranium	NI	x										
<i>Grindelia stricta</i>	marsh gumplant	FACW	n										
<i>Helminthotheca echioides</i>	prickly ox tongue	FAC	x										
<i>Hordeum brachyantherum</i>	meadow barley	FACW	n										
<i>Hordeum marinum</i>	Mediterranean barley	FAC	x										
<i>Hordeum murinum</i>	foxtail barley	NI	x										
<i>Juncus bufonius</i>	toad rush	FACW+	n										
<i>Juncus balticus</i>	baltic rush	OBL	n										
<i>Juncus effusus</i>	common bog rush	FACW+/OBL	n										
<i>Juncus mexicanus</i>	Mexican rush	FACW	n										
<i>Juncus patens</i>	spreading rush	FAC	n										
<i>Juncus xiphioides</i>	iris-leaved rush	OBL	n										
<i>Lactuca serriola</i>	prickly wild lettuce	FAC	x										
<i>Lasthenia glabrata</i>	goldfields	FACW	n										
<i>Limonium californicum</i>	marsh lavender	OBL	n										
<i>Lythrum hyssopifolia</i>	loosestrife	FACW	x										
<i>Malva nicaeensis</i>	bull mallow	UPL	x										
<i>Medicago polymorpha</i>	California bur clover	NI	x										
<i>Melilotus indica</i>	Indian sweetclover	FAC	x										
<i>Poa annua</i>	annual bluegrass	FACW-	x										
<i>Polygonum aviculare</i>	knotweed	FAC	x										
<i>Polyogon monspeliensis</i>	rabbitfoots grass	FACW+	x										
<i>Rumex crispus</i>	curly dock	FACW-	x										
<i>Salicornia pacifica</i>	pickleweed	OBL	n	55	60	45	40	71	85	5	30	15	45
<i>Salsola tragus</i>	prickly russian thistle	FACU	i										
<i>Schoenoplectus americanus</i>	chairmaker's bulrush	OBL	n										
<i>Schoenoplectus pungens</i> var. <i>longispicatus</i>	common three square	ONL	n										
<i>Silybum marianum</i>	milk thistle	NI	x										
<i>Spergularia rubra</i>	purple sand spurry	FAC-	x										
<i>Taeniatherum caput-medusae</i>	medusa head	NI	i										
<i>Trifolium dubium</i>	shamrock clover	FACU	x										
<i>Trifolium hirtum</i>	rose clover	NL	l										
Rock								9					
Biocrust													
Litter and Thatch				45	40	10	40	15	15	55	70	60	30
Bare ground								5					
Transect #'s				4	4	31	31	40	40	25	25	37	37
Line #'s				1	4	9	3	5	7	2	6	7	2

Notes: All photos from end. Side trans towards north east (towards mit wetland)  
All blank spaces denote a value of 0.

SPECIES	Common Name	indicator	n=native i=invasive x=exotic	Line 1		Line 2		Line 3		Line 4		Line 5	
				1	2	3	4	5	6	7	8	9	10
<i>Anagallis arvensis</i>	scarlet pimpernel	FAC	x										
<i>Anthemis cotula</i>	stinking chamomile	FACU	i										
<i>Avena sp.</i>	wild oats	NI	x										
<i>Baccharis glutinosa</i>	salt marsh baccharis	FACW	n										
<i>Baccharis pilularis</i>	coyote brush	NL	n										
<i>Bolboschoenus maritimus</i>	alkali bulrush	OBL	n					6					
<i>Brassica nigra</i>	black mustard	NL	l										
<i>Bromus hordeaceus</i>	soft chess	NI	x										
<i>Chenopodium atropost</i>	lamb's quarters	FAC	i					3	2				
<i>Convolvulus arvensis</i>	field bindweed	NI	x										
<i>Crypsis schoenoides</i>	swamp grass	OBL	x										
<i>Cyperus eragrostis</i>	umbrella sedge	FACW	n										
<i>Distichlis spicata</i>	salt grass	FACW	n										1
<i>Dittrichia graveolens</i>	stinkwort	UPL	x										
<i>Elymus glauca</i>	blue wildrye	FACU	n										
<i>Epilobium ciliatum</i>	willow herb	FACW	n										
<i>Eremocarpus setigerus</i>	turkey mullein	NI	n										
<i>Erodium sp.</i>	filaree	NI	x										
<i>Festuca perennis</i>	Italian ryegrass	FAC*	i										
<i>Frankenia salina</i>	alkali heath	FACW	n										
<i>Geranium sp.</i>	geranium	NI	x										
<i>Grindelia stricta</i>	marsh gumplant	FACW	n										
<i>Helminthotheca echioides</i>	prickly ox tongue	FAC	x										
<i>Hordeum brachyantherum</i>	meadow barley	FACW	n										
<i>Hordeum marinum</i>	Mediterranean barley	FAC	x										
<i>Hordeum murinum</i>	foxtail barley	NI	x										
<i>Juncus bufonius</i>	toad rush	FACW+	n										
<i>Juncus balticus</i>	baltic rush	OBL	n										
<i>Juncus effusus</i>	common bog rush	FACW+/OBL	n										
<i>Juncus mexicanus</i>	Mexican rush	FACW	n										
<i>Juncus patens</i>	spreading rush	FAC	n										
<i>Juncus xiphioides</i>	iris-leaved rush	OBL	n										
<i>Lactuca serriola</i>	prickly wild lettuce	FAC	x										
<i>Lasthenia glabrata</i>	goldfields	FACW	n										
<i>Limonium californicum</i>	marsh lavender	OBL	n										
<i>Lythrum hyssopifolia</i>	loosestrife	FACW	x										
<i>Malva nicaeensis</i>	bull mallow	UPL	x										
<i>Medicago polymorpha</i>	California bur clover	NI	x										
<i>Melilotus indica</i>	Indian sweetclover	FAC	x										
<i>Poa annua</i>	annual bluegrass	FACW-	x										
<i>Polygonum aviculare</i>	knotweed	FAC	x										
<i>Polygogon monspeliensis</i>	rabbitfoots grass	FACW+	x	5		55	4	10	5	1			8
<i>Rumex crispus</i>	curly dock	FACW-	x										
<i>Salicornia pacifica</i>	pickleweed	OBL	n	15		3	1	1	25	10	6	2	55
<i>Salsola tragus</i>	prickly russian thistle	FACU	i										
<i>Schoenoplectus americanus</i>	chairmaker's bulrush	OBL	n										
<i>Schoenoplectus pungens</i> var. <i>longispicatus</i>	common three square	ONL	n										
<i>Silybum marianum</i>	milk thistle	NI	x										
<i>Spergularia rubra</i>	purple sand spurry	FAC-	x										
<i>Taeniatherum caput-medusae</i>	medusa head	NI	i										
<i>Trifolium dubium</i>	shamrock clover	FACU	x										
<i>Trifolium hirtum</i>	rose clover	NL	i										
<i>Lotus corniculatus</i>	bird's foot trefoil	FAC	x										
Rock								5					2
Biocrust				50	90	32	10	85			15	80	5
Litter and Thatch													
Bare ground				30	10	10	85		61	88	79	10	37
Transect #s				10	10	27	27	53	53	50	50	32	32
Line #s				2	10	5	8	9	2	2	7	10	4

Notes: Transect 55 feet long.  
All blank spaces denote a value of 0.



SPECIES	Common Name	indicator	n=native i=invasive x=exotic	Line 1		Line 2		Line 3		Line 4		Line 5	
				1	2	3	4	5	6	7	8	9	10
<i>Anagallis arvensis</i>	scarlet pimpernel	FAC	x										
<i>Anthemis cotula</i>	stinking chamomile	FACU	i										
<i>Avena sp.</i>	wild oats	NI	x										
<i>Baccharis glutinosa</i>	salt marsh baccharis	FACW	n										
<i>Baccharis pilularis</i>	coyote brush	NL	n										
<i>Bolboschoenus maritimus</i>	alkali bulrush	OBL	n			20			10				
<i>Brassica nigra</i>	black mustard	NL	l										
<i>Bromus hordeaceus</i>	soft chess	NI	x										
<i>Chenopodium atropost</i>	lamb's quarters	FAC	i										
<i>Convolvulus arvensis</i>	field bindweed	NI	x										
<i>Crypsis schoenoides</i>	swamp grass	OBL	x										
<i>Cyperus eragrostis</i>	umbrella sedge	FACW	n										
<i>Distichlis spicata</i>	salt grass	FACW	n										
<i>Dittrichia graveolens</i>	stinkwort	UPL	x										
<i>Elymus glauca</i>	blue wildrye	FACU	n										
<i>Epilobium ciliatum</i>	willow herb	FACW	n										
<i>Eremocarpus setigerus</i>	turkey mullein	NI	n										
<i>Erodium sp.</i>	filaree	NI	x										
<i>Festuca perennis</i>	Italian ryegrass	FAC*	i										
<i>Frankenia salina</i>	alkali heath	FACW	n										
<i>Geranium sp.</i>	geranium	NI	x										
<i>Grindelia stricta</i>	marsh gumplant	FACW	n										
<i>Helminthotheca echioides</i>	prickly ox tongue	FAC	x										
<i>Hordeum brachyantherum</i>	meadow barley	FACW	n										
<i>Hordeum marinum</i>	Mediterranean barley	FAC	x										
<i>Hordeum murinum</i>	foxtail barley	NI	x										
<i>Juncus bufonius</i>	toad rush	FACW+	n										
<i>Juncus balticus</i>	baltic rush	OBL	n										
<i>Juncus effusus</i>	common bog rush	FACW+/OBL	n										
<i>Juncus mexicanus</i>	Mexican rush	FACW	n										
<i>Juncus patens</i>	spreading rush	FAC	n										
<i>Juncus xiphioides</i>	iris-leaved rush	OBL	n										
<i>Lactuca serriola</i>	prickly wild lettuce	FAC	x										
<i>Lasthenia glabrata</i>	goldfields	FACW	n										
<i>Limonium californicum</i>	marsh lavender	OBL	n										
<i>Lythrum hyssopifolia</i>	loosestrife	FACW	x										
<i>Malva nicaeensis</i>	bull mallow	UPL	x										
<i>Medicago polymorpha</i>	California bur clover	NI	x										
<i>Melilotus indica</i>	Indian sweetclover	FAC	x										
<i>Poa annua</i>	annual bluegrass	FACW-	x										
<i>Polygonum aviculare</i>	knotweed	FAC	x										
<i>Polygogon monspeliensis</i>	rabbitfoots grass	FACW+	x										
<i>Rumex crispus</i>	curly dock	FACW-	x										
<i>Salicornia pacifica</i>	pickleweed	OBL	n			2		1			+		2
<i>Salsola tragus</i>	prickly russian thistle	FACU	i										
<i>Schoenoplectus americanus</i>	chairmaker's bulrush	OBL	n										
<i>Schoenoplectus pungens</i> var. <i>longispicatus</i>	common three square	ONL	n										
<i>Silybum marianum</i>	milk thistle	NI	x										
<i>Spergularia rubra</i>	purple sand spurry	FAC-	x										
<i>Taeniatherum caput-medusae</i>	medusa head	NI	i										
<i>Trifolium dubium</i>	shamrock clover	FACU	x										
<i>Trifolium hirtum</i>	rose clover	NL	l										
<i>Lotus corniculatus</i>	bird's foot trefoil	FAC	x										
Rock					8					5			
Biocrust				60		80	75	95	90	10	40		90
Litter and Thatch													
Bare ground													
Transect #'s				17	17	25	25	38	38	42	42	7	7
Line #'s				4	7	2	5	5	9	6	10	3	8

Notes:                      Trans length 45 feet lines facing west  
 All blank spaces denote a value of 0.

*This Page Intentionally Left Blank*

**APPENDIX C**  
**HYDROLOGY MONITORING FORMS**

*This Page Left Blank Intentionally*

# Loch Lomond Wetlands Hydrology Monitoring

Date: 1/11/17  
 Monitor: Sean A  
 Current Weather: Sunny

Mitigation Wetland: MW1  
 MW2  
 MW3

	Point 1	Point 2	Point 3	Point 4	Point 5	Point 6
Distance from wetland boundry to edge of inudation/saturation	0-10 feet	11-20 feet	21-30 feet	31-40 feet	41-50 feet	51-60 feet
Is inudation present?				Y		
If so, how deep?				3.2 fl		
Is saturation present?				Y		
If so, how deep?				N/A		
Photos:				11:26am		
Lat & Long:						

Notes: Saturation assumed based on inudation. Inspection performed during high tide & a King tide

# Loch Lomond Wetlands Hydrology Monitoring

Date: 1/11/17  
 Monitor: SW/CP  
 Current Weather: Sunny

Mitigation Wetland: MW1  
 MW2  
MW3

	Point 1	Point 2	Point 3	Point 4	Point 5	Point 6
Distance from wetland boundry to edge of inudation/saturation	0-10 feet	11-20 feet	21-30 feet	31-40 feet	41-50 feet	51-60 feet
Is inudation present?				Y		
If so, how deep?				2.6ft		
Is saturation present?				Y		
If so, how deep?				N/A		
Photos:				12:45pm		
Lat & Long:				N/A		

Notes: Saturation is assumed based on level of ~~in~~ inudation.

**Loch Lomond Wetlands Hydrology Monitoring**

Date: 1/25/17  
 Monitor: D. Zwick  
 Current Weather: Sunny

Mitigation Wetland: (MW1)  
 MW2  
 MW3

Staff Guage Reading: 2.7ft

	Point 1	Point 2	Point 3	Point 4	Point 5	Point 6
Distance from wetland boundry to edge of inudation/saturation	0-10 feet	11-20 feet	21-30 feet	31-40 feet	41-50 feet	51-60 feet
Is inudation present?	yes	yes	yes	yes		
If so, how deep?	36inch	36inch	36inch	36inch		
Is saturation present?	assumed	assumed	assumed	assumed		
If so, how deep?	N/A	N/A	N/A	N/A		
Photos:	4:19 pm	4:19 pm	4:19 pm	4:19 pm		
Lat & Long:						

Notes: Saturation assumed based on inudation

# Loch Lomond Wetlands Hydrology Monitoring

Date: 1/25/17  
 Monitor: D. Zwick  
 Current Weather: Sunny

Mitigation Wetland: MW1  
MW2  
 MW3

Staff Guage Reading: 2.6ft

	Point 1	Point 2	Point 3	Point 4	Point 5	Point 6
Distance from wetland boundry to edge of inudation/saturation	0-10 feet	11-20 feet	21-30 feet	31-40 feet	41-50 feet	51-60 feet
Is inudation present?	yes	yes	yes	yes		
If so, how deep?	36 inch	36 inch	36 inch	36 inch		
Is saturation present?	assumed	assumed	assumed	assumed		
If so, how deep?	N/A	N/A	N/A	N/A		
Photos:	4:22pm	4:22pm	4:22pm	4:22pm		
Lat & Long:						

Notes: *saturation assumed based on inudation*



# Loch Lomond Wetlands Hydrology Monitoring

Date: 1/25/17  
 Monitor: D. Zwick  
 Current Weather: Sunny

Mitigation Wetland: MW1  
 MW2  
 MW3

Staff Guage Reading: 2.7ft

	Point 1	Point 2	Point 3	Point 4	Point 5	Point 6
Distance from wetland boundry to edge of inudation/saturation	0-10 feet	11-20 feet	21-30 feet	31-40 feet	41-50 feet	51-60 feet
Is inudation present?	Yes	Yes	Yes	Yes		
If so, how deep?	3 inch	24	36	34		
Is saturation present?	assumed	assumed	assumed	assumed		
If so, how deep?	N/A	N/A	N/A	N/A		
Photos:	4:25 pm	4:25 pm	4:25 pm	4:25 pm		
Lat & Long:						

Notes: Saturation assumed based on inudation

# Loch Lomond Wetlands Hydrology Monitoring

Date: 1/31/17  
 Monitor: D. Zwick  
 Current Weather: overcast

Mitigation Wetland: MW1  
 MW2  
 MW3

Staff Guage Reading: 1.67

	Point 1	Point 2	Point 3	Point 4	Point 5	Point 6
Distance from wetland boundry to edge of inudation/saturation	0-10 feet	11-20 feet	21-30 feet	31-40 feet	41-50 feet	51-60 feet
Is inudation present?	yes	yes	yes	yes		
If so, how deep?	0.2	0.6	1.1	1.67ft		
Is saturation present?	assumed	assumed	assumed	assumed		
If so, how deep?	N/A	N/A	N/A	N/A		
Photos:	1:23pm					
Lat & Long:						

Notes:

# Loch Lomond Wetlands Hydrology Monitoring

Date: 1/31/17  
 Monitor: D.Zw:ch  
 Current Weather: over cast

Mitigation Wetland: MW1  
MW2  
 MW3

Staff Guage Reading: 1.45 ft

	Point 1	Point 2	Point 3	Point 4	Point 5	Point 6
Distance from wetland boundry to edge of inudation/saturation	0-10 feet	11-20 feet	21-30 feet	31-40 feet	41-50 feet	51-60 feet
Is inudation present?	yes	yes	yes	yes		
If so, how deep?	5	7	1	1.45		
Is saturation present?	assumed	assumed	assumed	assumed		
If so, how deep?	N/A	N/A	N/A	N/A		
Photos:	1:20 pm					
Lat & Long:						

Notes: saturation assumed based on inudation

# Loch Lomond Wetlands Hydrology Monitoring

Date: 1/31/17  
 Monitor: D. Zwick  
 Current Weather: overcast

Mitigation Wetland: MW1  
 MW2  
 MW3

Staff Guage Reading: 1.51ft

	Point 1	Point 2	Point 3	Point 4	Point 5	Point 6
Distance from wetland boundry to edge of inudation/saturation	0-10 feet	11-20 feet	21-30 feet	31-40 feet	41-50 feet	51-60 feet
Is inudation present?	yes	yes	yes	yes		
If so, how deep?	3 inch	8 inch	1 ft	1.51ft		
Is saturation present?	assumed	assumed	assumed	assumed		
If so, how deep?	N/A	N/A	NA	N/A		
Photos:	1:28pm					
Lat & Long:						

Notes: saturation assumed based on inudation.

# Loch Lomond Wetlands Hydrology Monitoring

Date: 2/10/17  
 Monitor: D. Zwick  
 Current Weather: Overcast

Mitigation Wetland: MW1  
 MW2  
 MW3

Staff Guage Reading: 1.78 ft

	Point 1	Point 2	Point 3	Point 4	Point 5	Point 6
Distance from wetland boundry to edge of inudation/saturation	0-10 feet	11-20 feet	21-30 feet	31-40 feet	41-50 feet	51-60 feet
Is inudation present?	yes	yes	yes	yes		
If so, how deep?	2 inch	2 inch	2 inch	2 inch		
Is saturation present?	assumed	assumed	assumed	assumed		
If so, how deep?	N/A	N/A	N/A	N/A		
Photos:	9:55Am					
Lat & Long:						

Notes: saturation assumed based on observed inudation

# Loch Lomond Wetlands Hydrology Monitoring

Date: 2/10/17  
 Monitor: D. Zwic. K  
 Current Weather: Overcast

Mitigation Wetland: MW1  
MW2  
 MW3

Staff Guage Reading: 1.69ft

	Point 1	Point 2	Point 3	Point 4	Point 5	Point 6
Distance from wetland boundary to edge of inundation/saturation	0-10 feet	11-20 feet	21-30 feet	31-40 feet	41-50 feet	51-60 feet
Is inundation present?	<u>Yes</u>	<u>Yes</u>	<u>Yes</u>	<u>Yes</u>		
If so, how deep?	<u>20 inch</u>	<u>20 inch</u>	<u>20 inch</u>	<u>20 inch</u>		
Is saturation present?	<u>assumed</u>	<u>assumed</u>	<u>assumed</u>	<u>assumed</u>		
If so, how deep?	<u>N/A</u>	<u>N/A</u>	<u>N/A</u>	<u>N/A</u>		
Photos:	<u>9:50am</u>					
Lat & Long:						

Notes: Saturation based on observed inundation.

# Loch Lomond Wetlands Hydrology Monitoring

Date: 2/10/17  
 Monitor: D. Zwick  
 Current Weather: Overcast

Mitigation Wetland: MW1  
 MW2  
 MW3

Staff Guage Reading: 1.94 ft

	Point 1	Point 2	Point 3	Point 4	Point 5	Point 6
Distance from wetland boundary to edge of inundation/saturation	0-10 feet	11-20 feet	21-30 feet	31-40 feet	41-50 feet	51-60 feet
Is inundation present?	yes	yes	yes	yes		
If so, how deep?	22 inches	22 inches	22 inches	22 inches		
Is saturation present?	assumed	assumed	assumed	assumed		
If so, how deep?	N/A	N/A	N/A	N/A		
Photos:	10:00 am					
Lat & Long:						

Notes:  $\frac{1}{2}$  Saturation assumed based on observed inundation.

**Loch Lomond Wetlands Hydrology Monitoring**

Date: 2/24/17  
 Monitor: D. Zwickl  
 Current Weather: Partly Cloudy

Mitigation Wetland: MW1  
 MW2  
 MW3

Staff Gauge Reading: 1.68'

	Point 1	Point 2	Point 3	Point 4	Point 5	Point 6
Distance from wetland boundary to edge of inundation/saturation	0-10 feet	11-20 feet	21-30 feet	31-40 feet	41-50 feet	51-60 feet
Is inundation present?	<i>yes</i>	<i>yes</i>	<i>yes</i>	<i>yes</i>		
If so, how deep?	<i>20.16"</i>	<i>20.16"</i>	<i>20.16"</i>	<i>20.16"</i>		
Is saturation present?	<i>assumed</i>	<i>assumed</i>	<i>assumed</i>	<i>assumed</i>		
If so, how deep?	<i>N/A</i>	<i>N/A</i>	<i>N/A</i>	<i>N/A</i>		
Photos:	<i>1:31</i>					
Lat & Long:						

Notes: *saturation assumed based on observation of inundation.*



# Loch Lomond Wetlands Hydrology Monitoring

Date: 2/24/17  
 Monitor: D. Zwick  
 Current Weather: Partly Clouds

Mitigation Wetland: MW2  
 MW1  
 MW3

Staff Guage Reading: 1.59'

	Point 1	Point 2	Point 3	Point 4	Point 5	Point 6
Distance from wetland boundry to edge of inudation/saturation	0-10 feet	11-20 feet	21-30 feet	31-40 feet	41-50 feet	51-60 feet
Is inudation present?	yes	yes	yes	yes		
If so, how deep?	1q"	1q"	1q"	1q"		
Is saturation present?	assumed	assumed	assumed	assumed		
If so, how deep?	N/A	N/A	N/A	N/A		
Photos:	1:19pm					
Lat & Long:						

Notes: *saturation assumed based on observed inudation*

# Loch Lomond Wetlands Hydrology Monitoring

Date: 2/24/17  
 Monitor: D. Zwick  
 Current Weather: Partly Cloudy

Mitigation Wetland:

MW1  
 MW2  
MW3

Staff Guage Reading: 1.79'

	Point 1	Point 2	Point 3	Point 4	Point 5	Point 6
Distance from wetland boundary to edge of inundation/saturation	0-10 feet	11-20 feet	21-30 feet	31-40 feet	41-50 feet	51-60 feet
Is inundation present?	<u>yes</u>	<u>yes</u>	<u>yes</u>	<u>yes</u>		
If so, how deep?	<u>21.5"</u>	<u>21.5"</u>	<u>21.5"</u>	<u>21.5"</u>		
Is saturation present?	<u>assumed</u>	<u>assumed</u>	<u>assumed</u>	<u>assumed</u>		
If so, how deep?	<u>N/A</u>	<u>N/A</u>	<u>N/A</u>	<u>N/A</u>		
Photos:	<u>1:24</u>	<u>1:25</u>	<u>1:24</u>	<u>1:25</u>		
Lat & Long:						

Notes: saturation assumed based on observed inundation.

# Loch Lomond Wetlands Hydrology Monitoring

Date: 4/24/17  
 Monitor: Zwisch  
 Current Weather: Sunny

Mitigation Wetland: MW1  
 MW2  
 MW3

Staff Guage Reading: 1.0ft

	Point 1	Point 2	Point 3	Point 4	Point 5	Point 6
Distance from wetland boundry to edge of inudation/saturation	0-10 feet	11-20 feet	21-30 feet	31-40 feet	41-50 feet	51-60 feet
Is inudation present?	yes	yes	yes	yes		
If so, how deep?	12 inch	12 inch	12 inch	12 inch		
Is saturation present?	assumed	assumed	assumed	assumed		
If so, how deep?	N/A	N/A	N/A	N/A		
Photos:	12:18					
Lat & Long:						

Notes: saturation assumed based on inudation

# Loch Lomond Wetlands Hydrology Monitoring

Date: 4/25/17  
 Monitor: Zwisch  
 Current Weather: sunny

Mitigation Wetland: MW2  
 MW1  
 MW3

Staff Guage Reading: .9 ft

	Point 1	Point 2	Point 3	Point 4	Point 5	Point 6
Distance from wetland boundry to edge of inudation/saturation	0-10 feet	11-20 feet	21-30 feet	31-40 feet	41-50 feet	51-60 feet
Is inudation present?	yes	yes	yes	yes		
If so, how deep?	2 inch	4 inch	7 inch	10 inch		
Is saturation present?	assumed	assumed	assumed	assumed		
If so, how deep?	N/A	N/A	N/A	N/A		
Photos:	12:14pm					
Lat & Long:						

Notes: saturation assumed based on inudation

# Loch Lomond Wetlands Hydrology Monitoring

Date: 4/26/17  
 Monitor: ZW:CH  
 Current Weather: Sunny

Mitigation Wetland: MW1  
 MW2  
 MW3

Staff Guage Reading: 1.1 ft

	Point 1	Point 2	Point 3	Point 4	Point 5	Point 6
Distance from wetland boundry to edge of inudation/saturation	0-10 feet	11-20 feet	21-30 feet	31-40 feet	41-50 feet	51-60 feet
Is inudation present?	yes	yes	yes	yes		
If so, how deep?	6 inch	10 inch	13 inch	13 inch		
Is saturation present?	assumed	assumed	assumed	assumed		
If so, how deep?	N/A	N/A	N/A			
Photos:	12:11 pm	→	→	→		
Lat & Long:						

Notes: saturation assumed based on inudation

**Loch Lomond Wetlands Hydrology Monitoring**

Date: 5/1/17  
 Monitor: Bruce  
 Current Weather: Sunny

Mitigation Wetland: MW1  
 MW2  
 MW3

Staff Guage Reading: .8ft

	Point 1	Point 2	Point 3	Point 4	Point 5	Point 6
Distance from wetland boundry to edge of inudation/saturation	0-10 feet	11-20 feet	21-30 feet	31-40 feet	41-50 feet	51-60 feet
Is inudation present?	Yes	Yes	Yes	Yes		
If so, how deep?	9 inch	9 inch	9 inch	9 inch		
Is saturation present?	assumed	assumed	assumed	assumed		
If so, how deep?	N/A	N/A	N/A	N/A		
Photos:	12:50 pm					
Lat & Long:						

Notes: saturation assumed based on inudation

# Loch Lomond Wetlands Hydrology Monitoring

Date: 5/1/17  
 Monitor: Zw:CM  
 Current Weather: Sunny

Mitigation Wetland: MW1  
MW2  
 MW3

Staff Guage Reading: 5ft

	Point 1	Point 2	Point 3	Point 4	Point 5	Point 6
Distance from wetland boundry to edge of inudation/saturation	0-10 feet	11-20 feet	21-30 feet	31-40 feet	41-50 feet	51-60 feet
Is inudation present?	yes	yes	yes	yes		
If so, how deep?	1 inch	3 inch	3 inch	5 inch		
Is saturation present?	assumed	assumed	assumed	assumed		
If so, how deep?	N/A	N/A	N/A	N/A		
Photos:	12:42					
Lat & Long:						

Notes: saturation assumed based on inudation.

# Loch Lomond Wetlands Hydrology Monitoring

Date: 5/1/17  
 Monitor: Zwick  
 Current Weather: Sunny

Mitigation Wetland: MW1  
 MW2  
 MW3

Staff Guage Reading: .9

	Point 1	Point 2	Point 3	Point 4	Point 5	Point 6
Distance from wetland boundry to edge of inudation/saturation	0-10 feet	11-20 feet	21-30 feet	31-40 feet	41-50 feet	51-60 feet
Is inudation present?	yes	yes	yes	yes		
If so, how deep?	4 inch	6 inch	10 inch	10 inch		
Is saturation present?	assumed	assumed	assumed	assumed		
If so, how deep?	N/A	N/A	N/A	N/A		
Photos:	12:46					
Lat & Long:						

Notes: *saturation assumed based on inudation*



# Loch Lomond Wetlands Hydrology Monitoring

Date: 5/11/2017  
 Monitor: Bwirk  
 Current Weather: Partially Cloudy

Mitigation Wetland: MW1  
 MW2  
 MW3

Staff Guage Reading: 0.7 ft

	Point 1	Point 2	Point 3	Point 4	Point 5	Point 6
Distance from wetland boundry to edge of inudation/saturation	0-10 feet	11-20 feet	21-30 feet	31-40 feet	41-50 feet	51-60 feet
Is inudation present?	yes	yes	yes	yes		
If so, how deep?	7 inch	7 inch	7 inch	7 inch		
Is saturation present?	assumed	assumed	assumed	assumed		
If so, how deep?	N/A	N/A	N/A	N/A		
Photos:	11:17					
Lat & Long:						

Notes: saturation assumed based on ~~test~~ inudation

# Loch Lomond Wetlands Hydrology Monitoring

Date: 5/11/2017  
 Monitor: Bzwick  
 Current Weather: Partially cloudy

Mitigation Wetland: MW2  
 MW1  
 MW3

Staff Guage Reading: 0.0 ft

	Point 1	Point 2	Point 3	Point 4	Point 5	Point 6
Distance from wetland boundry to edge of inudation/saturation	0-10 feet	11-20 feet	21-30 feet	31-40 feet	41-50 feet	51-60 feet
Is inudation present?	No	No	No	Yes		
If so, how deep?	N/A	N/A	N/A	5 inch		
Is saturation present?	Yes	Yes	Yes	Yes		
If so, how deep?	< 1ft	< 1ft	< 1ft	< 1ft		
Photos:	11:18					
Lat & Long:						

Notes: Staff guage fully out of water. very little of the wetland remains inudated

# Loch Lomond Wetlands Hydrology Monitoring

Date: 5/11/17  
 Monitor: Bruce  
 Current Weather: partially cloudy

Mitigation Wetland: MW1  
 MW2  
 MW3

Staff Guage Reading: 0.8 ft

	Point 1	Point 2	Point 3	Point 4	Point 5	Point 6
Distance from wetland boundry to edge of inudation/saturation	0-10 feet	11-20 feet	21-30 feet	31-40 feet	41-50 feet	51-60 feet
Is inudation present?	no	yes	yes	yes		
If so, how deep?		1 inch	3 inch	7 inch		
Is saturation present?	yes	assumed	assumed	assumed		
If so, how deep?	< 1 ft	N/A	N/A	N/A		
Photos:	11:20.					
Lat & Long:						

Notes: saturation from 11-40 ft is assumed based on inudation

# Loch Lomond Wetlands Hydrology Monitoring

Date: 5/25/17  
 Monitor: Russell A.  
 Current Weather: 65°

Mitigation Wetland: MW1  
 MW2  
 MW3

Staff Guage Reading: 0.4 ft

	Point 1	Point 2	Point 3	Point 4	Point 5	Point 6
Distance from wetland boundary to edge of inundation/saturation	0-10 feet	11-20 feet	21-30 feet	31-40 feet	41-50 feet	51-60 feet
Is inundation present?	Yes					
If so, how deep?	.4 ft					
Is saturation present?	N/A					
If so, how deep?	N/A					
Photos:	Loch Loman Photos 5.25.17 folder					
Lat & Long:	37°58'24.65"N 122°28'45.39"W					

Notes:

# Loch Lomond Wetlands Hydrology Monitoring

Date: 5/25/17  
 Monitor: Russell Andrews  
 Current Weather: 65°

Mitigation Wetland: MW1  
MW2  
 MW3

Staff Guage Reading: N/A (Dry)

	Point 1	Point 2	Point 3	Point 4	Point 5	Point 6
Distance from wetland boundary to edge of inundation/saturation	0-10 feet	11-20 feet	21-30 feet	31-40 feet	41-50 feet	51-60 feet
Is inundation present?						No
If so, how deep?						N/A
Is saturation present?						No
If so, how deep?						N/A
Photos:						loch Lohman Photos 5.25.17 Folder
Lat & Long:						37°58'23.28"N 122°28'42.62"W

Notes:

# Loch Lomond Wetlands Hydrology Monitoring

Date: 5/25/17  
 Monitor: Russell Andrews  
 Current Weather: 65°

Mitigation Wetland: MW1  
 MW2  
 MW3

Staff Guage Reading: .6 ft

	Point 1	Point 2	Point 3	Point 4	Point 5	Point 6
Distance from wetland boundary to edge of inundation/saturation	0-10 feet	11-20 feet	21-30 feet	31-40 feet	41-50 feet	51-60 feet
Is inundation present?	Yes					
If so, how deep?	.6ft					
Is saturation present?	N/A					
If so, how deep?	N/A					
Photos:	Loch Loman Photos 5.25.17 folder					
Lat & Long:	37° 58' 22.72" N 122° 28' 38.52" W					

Notes:

**APPENDIX D**  
**MANAGEMENT PLAN MONITORING FORMS**

*This Page Left Blank Intentionally*



**Loch Lomond Regular Maintenance and Management Plan Monitoring**

Date: 1/12/2017  
Monitor: Sean Avent

Post Storm Event? Yes  No

**Wetland Fence**

Are any breaks in the fence? Yes  No

Are any fence repairs required? Yes  No

Locations of repairs needed: None

**Signs**

Are all signs present?  Yes  No

Are all signs legible and unobstructed?  Yes  No

Do any signs require repair or replacement? Yes  No

Locations of repairs needed: None

**Erosion**

Is an erosion evident on banks? Yes  No

Is erosion evident elsewhere? Yes  No

Locations of erosional repairs needed: None

**Debris**

Is any debris (dead vegetation or trash) present? Yes  No

Was debris controlled and picked up? Yes  No  N/A

Is there a need for additional debris control? Yes  No

Locations of additional debris removal needed: None in wetland - outside on public path only

**Non-Native Vegetation (Biologists Only)**

Non-native vegetation removal recommended?  Yes  No

Locations of non-natives to be targeted: Uplands surrounding all wetlands

Species of non-native vegetation: various

**Loch Lomond Regular Maintenance and Management Plan Monitoring**

Date: 1/12/17  
Monitor: Bruce

Post Storm Event?  Yes No

**Wetland Fence**

Are any breaks in the fence? Yes  No  
Are any fence repairs required? Yes  No

Locations of repairs needed: \_\_\_\_\_

**Signs**

Are all signs present?  Yes No  
Are all signs legible and unobstructed?  Yes No  
Do any signs require repair or replacement? Yes  No

Locations of repairs needed: \_\_\_\_\_

**Erosion**

Is an erosion evident on banks? Yes  No  
Is erosion evident elsewhere? Yes  No

Locations of erosional repairs needed: \_\_\_\_\_

**Debris**

Is any debris (dead vegetation or trash) present?  Yes No  
Was debris controlled and picked up? Yes  No  
Is there a need for additional debris control?  Yes No

Locations of additional debris removal needed: Entire Site

**Non-Native Vegetation (Biologists Only)**

Non-native vegetation removal recommended?  Yes No

Locations of non-natives to be targeted: upland buffer areas

Species of non-native vegetation: mustard, radish, italian Ryegrass.

**Loch Lomond Regular Maintenance and Management Plan Monitoring**

Date: 1/25/17 Post Storm Event? Yes No  
Monitor: D. Zwick

**Wetland Fence**

Are any breaks in the fence? Yes  No

Are any fence repairs required? Yes  No

Locations of repairs needed: \_\_\_\_\_

**Signs**

Are all signs present?  Yes No

Are all signs legible and unobstructed?  Yes No

Do any signs require repair or replacement? Yes  No

Locations of repairs needed: \_\_\_\_\_

**Erosion**

Is an erosion evident on banks? Yes  No

Is erosion evident elsewhere? Yes  No

Locations of erosional repairs needed: \_\_\_\_\_

**Debris**

Is any debris (dead vegetation or trash) present?  Yes No

Was debris controlled and picked up? Yes  No

Is there a need for additional debris control?  Yes No

Locations of additional debris removal needed: In upland buffer areas

**Non-Native Vegetation (Biologists Only)**

Non-native vegetation removal recommended?  Yes No

Locations of non-natives to be targeted: upland buffer areas

Species of non-native vegetation: mustard, stinkwort, Russian thistle

## Loch Lomond Regular Maintenance and Management Plan Monitoring

Date: 1/31/17 Post Storm Event? Yes No  
Monitor: D. Zwick

### Wetland Fence

Are any breaks in the fence? Yes  No

Are any fence repairs required? Yes  No

Locations of repairs needed:

### Signs

Are all signs present?  Yes No

Are all signs legible and unobstructed?  Yes No

Do any signs require repair or replacement? Yes  No

Locations of repairs needed:

### Erosion

Is an erosion evident on banks? Yes  No

Is erosion evident elsewhere? Yes  No

Locations of erosional repairs needed:

### Debris

Is any debris (dead vegetation or trash) present?  Yes No

Was debris controlled and picked up? Yes  No

Is there a need for additional debris control?  Yes No

Locations of additional debris removal needed:

Trash located throughout site, due to flooding

### Non-Native Vegetation (Biologists Only)

Non-native vegetation removal recommended?  Yes No

Locations of non-natives to be targeted:

Inland buffer areas

Species of non-native vegetation:

Russian Thistle, Stinkwort

## Loch Lomond Regular Maintenance and Management Plan Monitoring

Date: 2/10/17

Post Storm Event?  Yes  No

Monitor: D. Zwick

### Wetland Fence

Are any breaks in the fence? Yes  No

Are any fence repairs required? Yes  No

Locations of repairs needed: \_\_\_\_\_

### Signs

Are all signs present?  Yes  No

Are all signs legible and unobstructed?  Yes  No

Do any signs require repair or replacement? Yes  No

Locations of repairs needed: \_\_\_\_\_

### Erosion

Is an erosion evident on banks? Yes  No

Is erosion evident elsewhere? Yes  No

Locations of erosional repairs needed: \_\_\_\_\_

### Debris

Is any debris (dead vegetation or trash) present?  Yes  No

Was debris controlled and picked up? Yes  No

Is there a need for additional debris control?  Yes  No

Locations of additional debris removal needed: Debris located in upland buffer area and along pathway

### Non-Native Vegetation (Biologists Only)

Non-native vegetation removal recommended?  Yes  No

Locations of non-natives to be targeted: upland buffer area.

Species of non-native vegetation: Mustard, stinkweed, Russian thistle

**Loch Lomond Regular Maintenance and Management Plan Monitoring**

Date: 2/24/17  
Monitor: D. Zwick

Post Storm Event? Yes  No

Wetland Fence

Are any breaks in the fence? Yes  No   
Are any fence repairs required? Yes  No   
Locations of repairs needed: \_\_\_\_\_

Signs

Are all signs present?  Yes  No  
Are all signs legible and unobstructed?  Yes  No  
Do any signs require repair or replacement? Yes  No   
Locations of repairs needed: \_\_\_\_\_

Erosion

Is an erosion evident on banks? Yes  No   
Is erosion evident elsewhere? Yes  No   
Locations of erosional repairs needed: \_\_\_\_\_

Debris

Is any debris (dead vegetation or trash) present?  Yes  No  
Was debris controlled and picked up? Yes  No   
Is there a need for additional debris control?  Yes  No  
Locations of additional debris removal needed: \_\_\_\_\_

upland buffer area

Non-Native Vegetation (Biologists Only)

Non-native vegetation removal recommended?  Yes  No  
Locations of non-natives to be targeted: \_\_\_\_\_  
Species of non-native vegetation: \_\_\_\_\_

upland buffer area

Russian thistle, mulch.

## Loch Lomond Regular Maintenance and Management Plan Monitoring

Date: 4/26/17  
Monitor: Zwick

Post Storm Event? Yes  No

### Wetland Fence

Are any breaks in the fence? Yes  No

Are any fence repairs required? Yes  No

Locations of repairs needed: N/A

### Signs

Are all signs present? Yes  No

Are all signs legible and unobstructed? Yes  No

Do any signs require repair or replacement? Yes  No

Locations of repairs needed: N/A

### Erosion

Is an erosion evident on banks? Yes  No

Is erosion evident elsewhere? Yes  No

Locations of erosional repairs needed: \_\_\_\_\_

### Debris

Is any debris (dead vegetation or trash) present? Yes  No

Was debris controlled and picked up? Yes  No

Is there a need for additional debris control? Yes  No

Locations of additional debris removal needed: within mitigation wetlands & upland buffer area.

### Non-Native Vegetation (Biologists Only)

Non-native vegetation removal recommended? Yes  No

Locations of non-natives to be targeted: N/A

Species of non-native vegetation: N/A

# Loch Lomond Regular Maintenance and Management Plan Monitoring

Date: 5/1/17  
Monitor: ZW:LN

Post Storm Event?    Yes    No

## Wetland Fence

Are any breaks in the fence?    Yes     No

Are any fence repairs required?    Yes     No

Locations of repairs needed: N/A

## Signs

Are all signs present?     Yes    No

Are all signs legible and unobstructed?     Yes    No

Do any signs require repair or replacement?    Yes     No

Locations of repairs needed: N/A

## Erosion

Is an erosion evident on banks?    Yes     No

Is erosion evident elsewhere?    Yes     No

Locations of erosional repairs needed: N/A

## Debris

Is any debris (dead vegetation or trash) present?     Yes    No

Was debris controlled and picked up?    Yes     No

Is there a need for additional debris control?     Yes    No

Locations of additional debris removal needed: trash located w/in wetlands

## Non-Native Vegetation (Biologists Only)

Non-native vegetation removal recommended?    Yes     No

Locations of non-natives to be targeted: N/A

Species of non-native vegetation: N/A



**Loch Lomond Regular Maintenance and Management Plan Monitoring**

Date: 5/11/17  
Monitor: B. Weick

Post Storm Event? Yes  No

**Wetland Fence**

Are any breaks in the fence? Yes  No

Are any fence repairs required? Yes  No

Locations of repairs needed: N/A

**Signs**

Are all signs present?  Yes  No

Are all signs legible and unobstructed?  Yes  No

Do any signs require repair or replacement? Yes  No

Locations of repairs needed: N/A

**Erosion**

Is an erosion evident on banks? Yes  No

Is erosion evident elsewhere? Yes  No

Locations of erosional repairs needed: N/A

**Debris**

Is any debris (dead vegetation or trash) present?  Yes  No

Was debris controlled and picked up? Yes  No

Is there a need for additional debris control?  Yes  No

Locations of additional debris removal needed: trash w/in wetlands

**Non-Native Vegetation (Biologists Only)**

Non-native vegetation removal recommended? Yes  No

Locations of non-natives to be targeted: N/A

Species of non-native vegetation: N/A

**Loch Lomond Regular Maintenance and Management Plan Monitoring**

Date: 8/17/17  
Monitor: DZ, NC

Post Storm Event? Yes  No

**Wetland Fence**

Are any breaks in the fence? Yes  No   
Are any fence repairs required? Yes  No   
Locations of repairs needed: \_\_\_\_\_

**Signs**

Are all signs present?  Yes  No  
Are all signs legible and unobstructed?  Yes  No  
Do any signs require repair or replacement? Yes  No   
Locations of repairs needed: \_\_\_\_\_

**Erosion**

Is an erosion evident on banks? Yes  No   
Is erosion evident elsewhere? Yes  No   
Locations of erosional repairs needed: \_\_\_\_\_

**Debris**

Is any debris (dead vegetation or trash) present? Yes  No   
Was debris controlled and picked up? Yes  No   
Is there a need for additional debris control? Yes  No   
Locations of additional debris removal needed: \_\_\_\_\_

**Non-Native Vegetation (Biologists Only)**

Non-native vegetation removal recommended?  Yes  No  
Locations of non-natives to be targeted: Between MW1 and MW2  
Species of non-native vegetation: Salsola soda (Alkali Russian Thistle)

**APPENDIX E**

**US ARMY CORPS OF ENGINEERS MITIGATION MONITORING FORM**

*This Page Left Blank Intentionally*

<b>Section A: General Project Information</b>		
1. Project name: Village at Loch Lomond Marina	2. DA file number(s): 2004-287030N	3. Project type: Permittee responsible
4. Permittee, bank or in-lieu fee sponsor name and work phone number: John Arvin, Marina Village Associates, LLC. 310-824-2200	5. Permittee, bank or in-lieu fee sponsor mailing address: 1999 Avenue of the Stars, Suite 2850, Los Angeles, CA 90067.	6. Permittee, bank or in-lieu fee sponsor e-mail address: john@woodridgecapital.com
7. Agent name and work phone number: Sean Avent, WRA, 415-524-7549	8. Agent mailing address: 2169-G East Francisco Blvd., San Rafael, CA 94901	9. Agent e-mail address: avent@wra-ca.com
<b>Section B: Notice of Commencement/Completion of Compensatory Mitigation Project</b>		
1. Commencement: Y <input checked="" type="checkbox"/> N <input type="checkbox"/> Click here to enter a date.	2. Completion: Y <input checked="" type="checkbox"/> N <input type="checkbox"/> Click here to enter a date.	3. Financial assurance remains in place : Y <input checked="" type="checkbox"/> N <input type="checkbox"/>
4. Requesting release of a financial assurance? Y <input type="checkbox"/> N <input checked="" type="checkbox"/>	5. Name of contractor (if any): Click here to enter text.	6. Phone number of contractor (if any): Click here to enter text.
<b>Please note that your permitted activity is subject to a compliance inspection by a U.S. Army Corps of Engineers representative. If you fail to comply with this permit, you may be subject to permit suspension, modification, or revocation.</b>		
<b>SECTION C: Mitigation Monitoring Status</b>		
1. Final monitoring completed and verification requested? Y <input checked="" type="checkbox"/> N <input type="checkbox"/>	2. Date of monitoring reported here: 8/17/2017	3. Monitoring report no. 2 of 5
4. Management and maintenance activities completed (for example: fencing installation/repair or trash removal (include dates): Hydrology monitoring, vegetation monitoring (8/17/17).		
5. Adaptive management activities completed (include dates): Adaptive management not required. The site is performing as expected.		

**SECTION C: Mitigation Monitoring Status (continued from page 1)**

**6. Performance standards**

Year	Performance Standard	Goal	Results
2	The majority of Mitigation Wetlands (MW1-MW3) will be continually inundated for at least two weeks.	Click here to enter text.	Performance standard met for Year 2. The mitigation wetlands were continually inundated for over four weeks.
2	The majority of the soils within Mitigation Wetlands (MW1-MW3) will be continually saturated for at least six weeks.	Click here to enter text.	Performance standard met for Year 2. The soils in the mitigation wetlands were saturated for over six weeks.
2	Invasive plants on the California Invasive Plant Council (Cal-IPC) "A" List will not exceed five percent cover within mitigation wetlands.	Click here to enter text.	Performance standard met for Year 2. Invasive plants did not exceed 0.0% cover within the mitigation wetlands.
2	Total vegetation percent cover in Mitigation Wetlands (MW1-MW3) should average at least 30 percent of the Reference site's total vegetation percent cover.	Click here to enter text.	Performance standard met for Year 2. The total vegetation percent cover averaged 38.16% of the reference wetland site's total vegetation percent cover.
2	The percent cover of non-native species within Mitigation Wetlands (MW1-MW3) should not exceed 140 percent of the non-native vegetation percent cover within the Reference Wetlands (RW1-RW3).	Click here to enter text.	Performance standard met for Year 2. The percent cover of non-native species within the mitigation wetlands was 138% of the non-native vegetation percent cover within the reference wetlands.
2	The wetlands mitigation areas will meet the three Corps wetlands criteria (Environmental Laboratory 1987) in YEAR 5.	Click here to enter text.	Not applicable for Year 2.
Click here to enter text.	Click here to enter text.	Click here to enter text.	Click here to enter text.
Click here to enter text.	Click here to enter text.	Click here to enter text.	Click here to enter text.
Click here to enter text.	Click here to enter text.	Click here to enter text.	Click here to enter text.

Click here to enter text.	Click here to enter text.	Click here to enter text.	Click here to enter text.
<p>7. Short statement on whether the performance standards are being met: All of the Year 2 performance standards were met during the second annual monitoring visit.</p>			
<p>8. Conclusions and adaptive management activities proposed (addressing unresolved issues, failure to meet performance standards): Overall, the mitigation area is performing successfully and is meeting all of the Year 2 performance standards.</p>			

**SECTION D: Photo Log**

1. Number: MW1

2. Date: 8/17/2017

3. Compass direction taken:  
Degrees: 315  
Cardinal/intercardinal: Northwest

4. Coordinates (decimal degrees):  
Latitude: [Click here to enter text.](#)  
Longitude: [Click here to enter text.](#)

5. Photographer name: D. Zwick

6. Description: : Photograph of the mitigation wetland. (See Appendix A of the report for a year-to-year comparison of progress within the mitigation area.)



1. Number: MW2

2. Date: 8/17/2017

3. Compass direction taken:  
Degrees: 330  
Cardinal/intercardinal: North

4. Coordinates (decimal degrees):  
Latitude: [Click here to enter text.](#)  
Longitude: [Click here to enter text.](#)

5. Photographer name: D. Zwick

6. Description: : Photograph of the mitigation wetland. (See Appendix A of the report for a year-to-year comparison of progress within the mitigation area.)





Section E: Map of photograph locations

Map Number: Figure 4 of Report

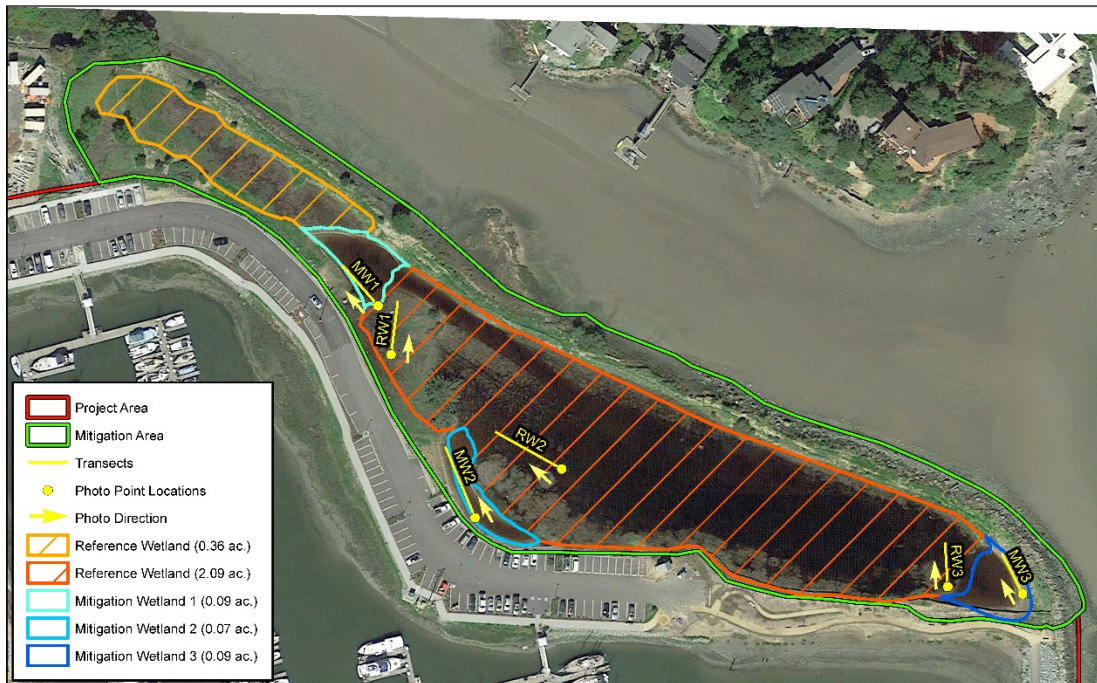


Figure 4. Wetland Monitoring Transects and Photo Point Locations

Loch Lomond  
Marin County, California



Map Prepared Date: 12/23/2016  
Map Prepared By: #ncurigan  
Base Source: Esri Streaming - GE March 16, 2016  
Data Source(s): WRA

Path: L:\Acad 2000 Files\1200012094 3\ArcMap\Fig 2 Mitigation Area Overview.mxd

*This Page Intentionally Left Blank*