

MARIN COUNTY BREEDING BIRD ATLAS II

PRESENTATION TO POINT SAN PEDRO ROAD COALITION

February 27, 2024



<https://marinaudubon.org/birds/marin-county-breeding-bird-atlas/>



Photo by Bonnie Marmor

East and West Marin Islands



AGENDA

- What is a Breeding Bird Atlas?
- Why Do an Atlas?
- What have we learned?
- How can you support the Marin County Breeding Bird Atlas?

Green Heron



Osprey

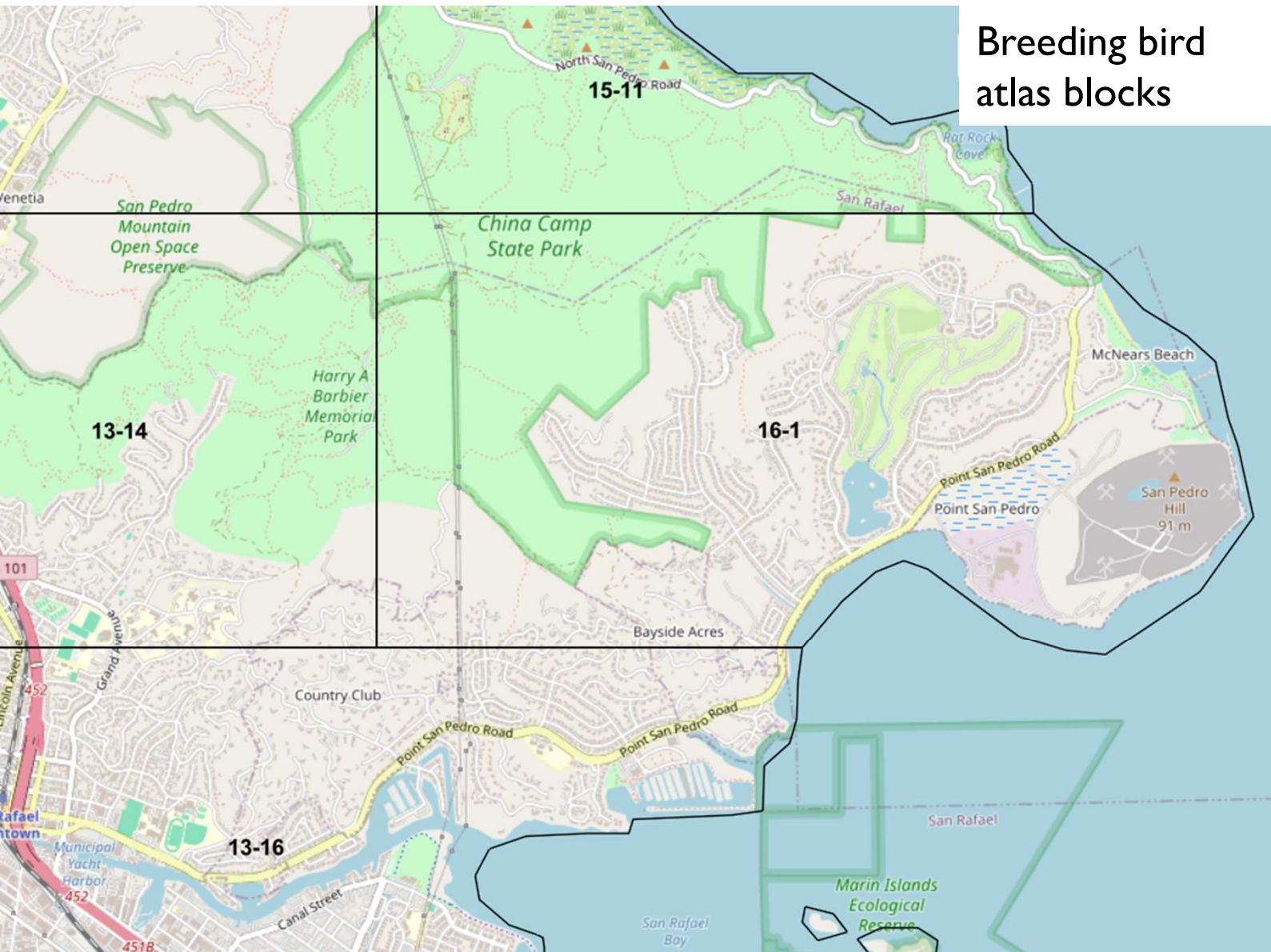


Photo by Bonnie Marmor



MARIN COUNTY
BREEDING BIRD ATLAS

Breeding bird atlas blocks



CITIZEN LED SCIENCE



77 Block
Leaders and
137 Observers
in 2023

5262
survey
hours from
2021-2023

WHY DO AN ATLAS?

- Identifies species with limited or restricted distributions
- Do species numbers appear to be stable or declining?
- Tool for land managers, conservationists, consultants, agencies and anyone who wants to learn more about local birds

Black
Oystercatcher



What have we learned?



Ridgway's Rail

Peregrine Falcon

11 species are new breeders in Marin including **American Avocet, Bald Eagle** and **Peregrine Falcon**



Bald Eagle



157 species

documented breeding
during 1st atlas
(1976-78, 1982)

161 species

documented (2021-2023)
across all breeding
categories (possible,
probable, confirmed)

Data preliminary as
there are multiple blocks
with no or partial surveys



BREEDING BEHAVIOR CODES-LOWEST TO HIGHEST

CODES (LOWEST to HIGHEST confidence)

Excluded - unlikely breeders.

X: Excluded. Not a local or regionally breeding bird or a species that would be highly unusual for your block.

Possible

H: In appropriate habitat

S: Singing and territorial calls in appropriate habitat

Probable

M: Multiple (3+) singing/territorial calls/drumming individuals

P: Pair in suitable habitat

T: Territorial behavior 7+ days apart =eBird code S7

A: Agitated behavior

D: Courtship/copulation/display (including ANHU/ALHU displays)

V: Visiting probable nest site

N: Multiple-nest builders (wrens, plovers scraping, woodpeckers excavating)

Confirmed *denotes lat/long required

CN: Carrying/collecting material (nest not found; for wrens see N)

***NB:** Nest building (nest site found; for exceptions see N)

DD: Distraction display

***NU:** Used nest =eBird code UN

***AE:** Adult entering nest =eBird code ON

CF: Food carry (unknown/unspecified if to fledgling or nestling)

FY: Fledged young, food carry to fledglings, or precocial downy young

FS: Carrying fecal sac

***NE:** Nest w/ eggs

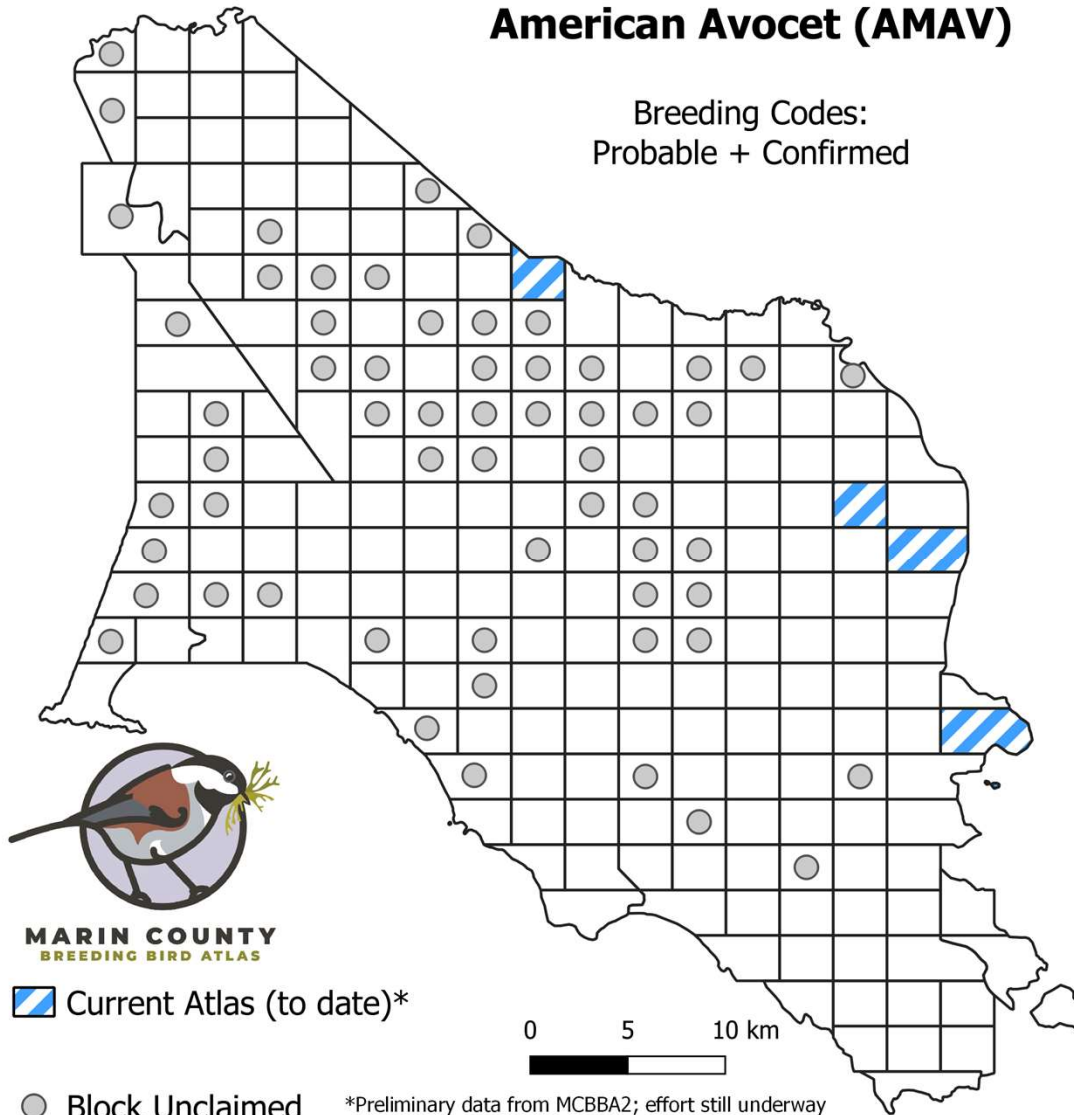
***NY:** Nest w/ young (includes food carry to nestlings)



MARIN COUNTY
BREEDING BIRD ATLAS

American Avocet (AMAV)

Breeding Codes:
Probable + Confirmed

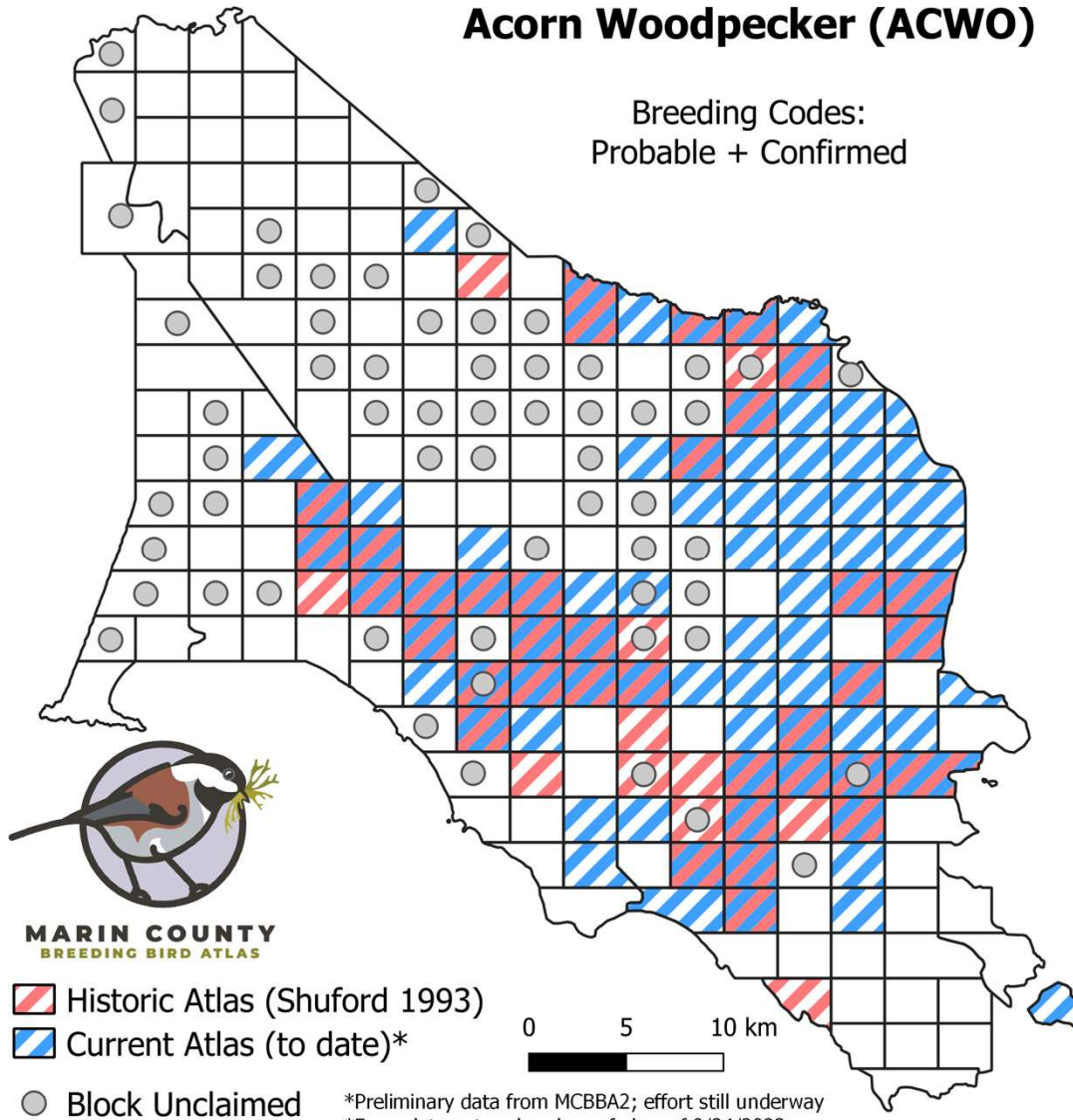


*Preliminary data from MCBBA2; effort still underway
*From data entered and proofed as of 9/24/2023



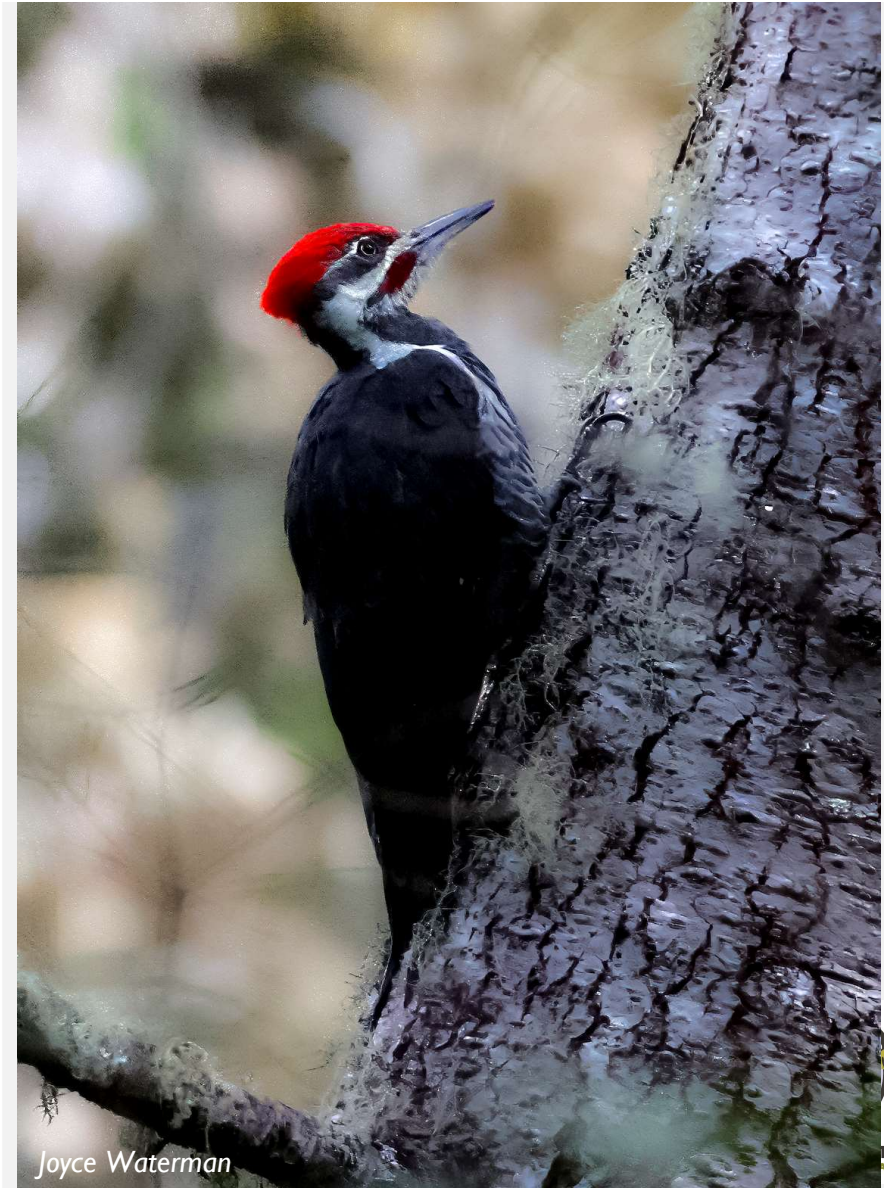
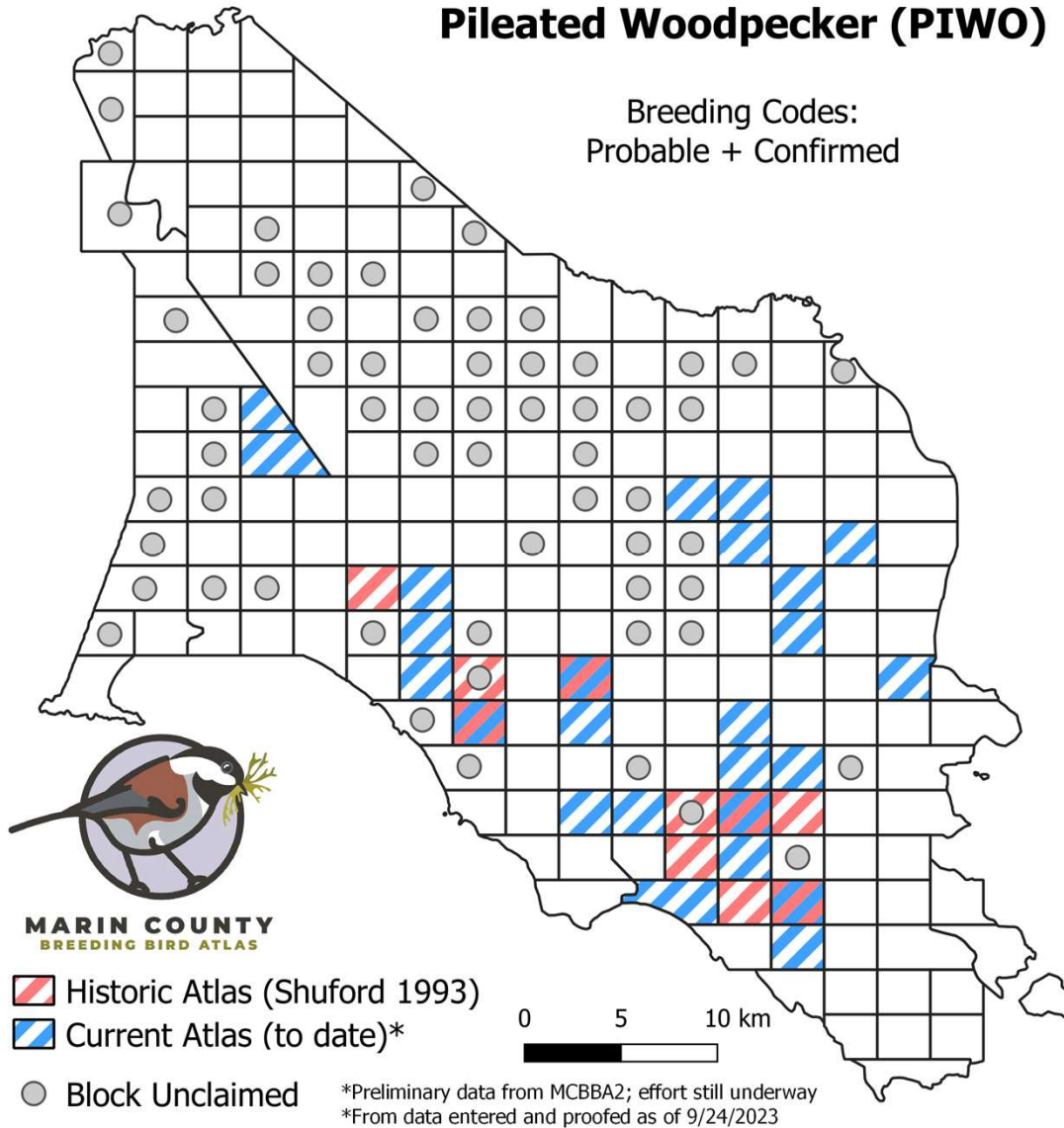
Acorn Woodpecker (ACWO)

Breeding Codes:
Probable + Confirmed



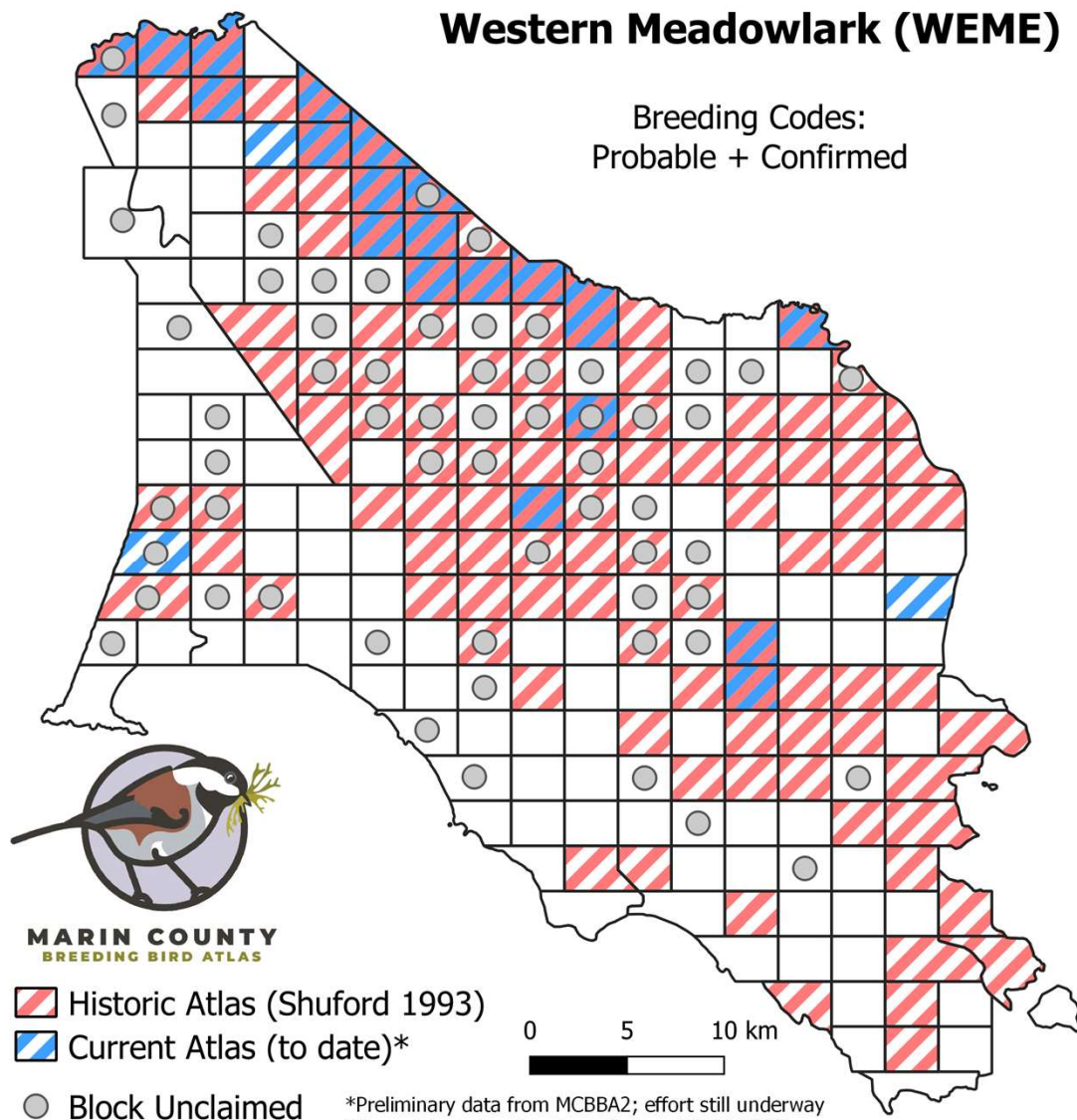
Pileated Woodpecker (PIWO)

Breeding Codes:
Probable + Confirmed



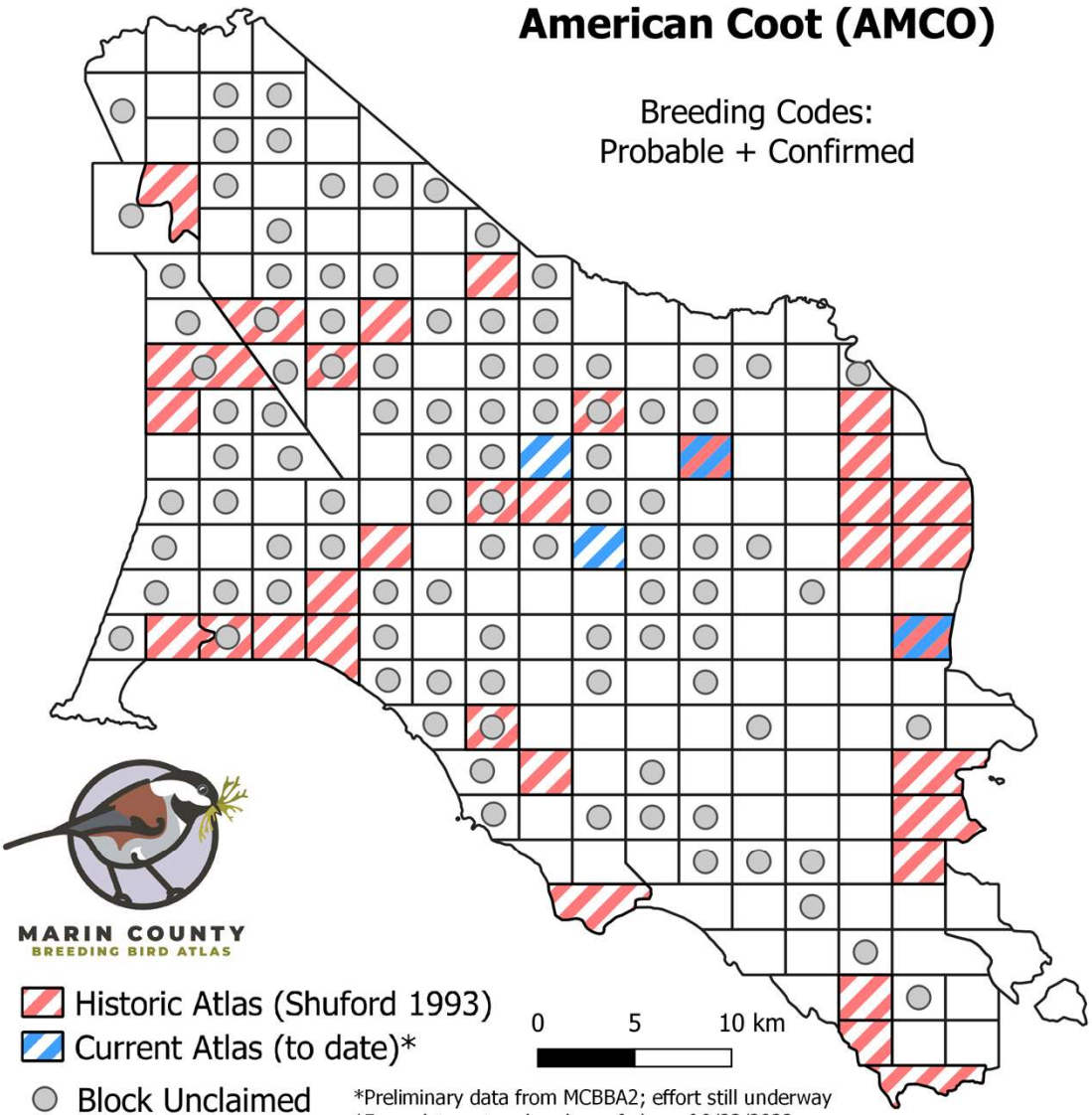
Western Meadowlark (WEME)

Breeding Codes:
Probable + Confirmed



American Coot (AMCO)

Breeding Codes:
Probable + Confirmed



American Coot



CHINA CAMP STATE PARK & MCNEAR'S PARK (BLOCKS 15-11 & 16-1)

Species observed in 2021-22 but not during first Atlas

- **Gadwall**
- **Wild Turkey**
- **Eurasian Collared Dove**
- **Black-necked Stilt**
- **American Avocet**
- **Osprey**
- **White-tailed Kite**
- **Cooper's Hawk**
- **Red-shouldered Hawk**
- **Western Screech-Owl**
- **Great Horned Owl**
- **Acorn Woodpecker**
- **Downy Woodpecker**
- **Nuttall's Woodpecker**
- **Hairy Woodpecker**
- **Pileated Woodpecker**
- **Common Raven**
- **Tree Swallow**
- **Pygmy Nuthatch**
- **Blue Gray Gnatcatcher**
- **Western Bluebird**
- **Wilson's Warbler**



HOW CAN YOU PARTICIPATE?

Western Bluebird



HOW TO SUBMIT OBSERVATIONS OF BREEDING BIRDS

[HTTPS://MARINAUDUBON.ORG/BIRDS/MARIN-COUNTY-BREEDING-BIRD-ATLAS/](https://marinaudubon.org/birds/marin-county-breeding-bird-atlas/)

- Anyone can submit incidental breeding observations!
- Go to **Submitting Your Data and Observations**
- Use the **Incidental Breeding Observations Webform**
- **Owl** sightings or vocalizations
- For all other birds-only use for probable or confirmed breeding behaviors:
 - Courtship and copulation
 - Nest building
 - Carrying nest material
 - Adult carrying food
 - Adults flying onto or off of a nest

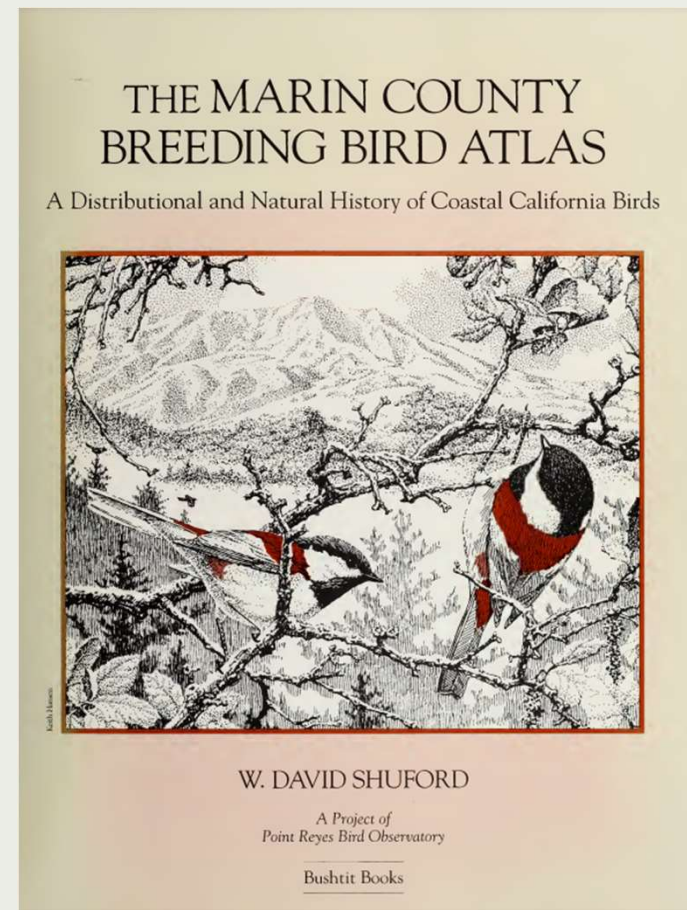


Western Bluebird



VOLUNTEER AS A BLOCK LEADER (OR BLOCKBUSTER)

- Can you identify bird songs by ear?
- Want to get better at bird song ID?
- Familiar with spring and summer species?
- Curious about bird behaviors?
- Comfortable with data collection and data entry?
- Minimum 16 hours per season



EARLY BIRDS TO WATCH FOR

Allen's Hummingbird



Barn owl



Great horned Owl



TARGET SPECIES FOR 2024



TARGET SPECIES FOR 2024

Hooded Oriole



Joyce Waterman

Bullock's Oriole



Joyce Waterman

TARGET SPECIES FOR 2024



Western Screech Owl



TARGET SPECIES 2024

Killdeer



Len Blumin

Pied billed grebe





Red-shouldered Hawk

PROJECT TEAM

- Marin Audubon Society-fiscal sponsor
- Project Coordinators-Diana Humple, Daphne Hatch, Liz Lewis
- Volunteer Coordinator-Susan Kelly
- Point Blue Science-part-time project manager-Hilary Allen
- Data Explorer-William Wiskes



MARIN COUNTY
BREEDING BIRD ATLAS

THANK YOU!

To learn more about Marin's breeding birds and how you can support the Marin Breeding Bird Atlas, please visit our web site:

<https://marinaudubon.org/birds/marin-county-breeding-bird-atlas/>

Interested in volunteering, contact us at mcbreedingbirdatlas@gmail.com

Wilson's Warbler

